

**INSTRUCCIONES GENERALES PARA EL
MONTAJE DE LA MESA DE SALIDA DE 180°**

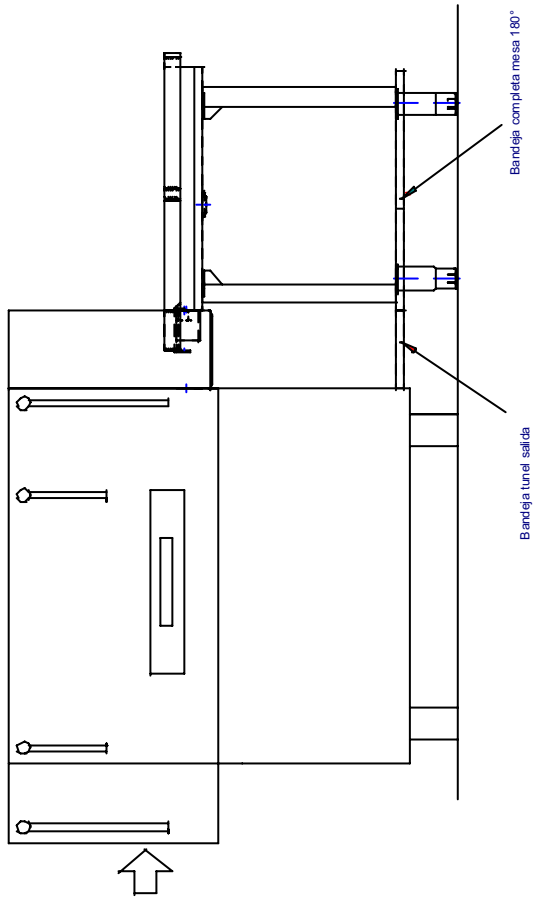
**INSTRUCTIONS GÉNÉRALES POUR LE MONTAGE
DE LA TABLE DE SORTIE À 180°**

**GENERAL INSTRUCTIONS FOR THE ASSEMBLY
OF THE 180° EXIT TABLE**

**ALLGEMEINE ANWEISUNGEN ZUM
EINBAU DES 180°-AUSLAUFTISCHES**

**ISTRUZIONI GENERALI PER IL MONTAGGIO DEL
TAVOLO DI USCITA A 180°**

Z-312535

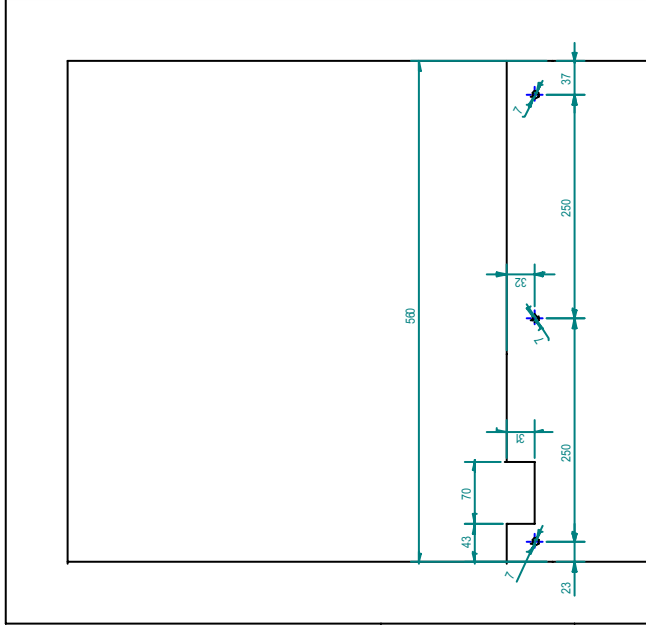


Mesa dcha: Union mesa-lav. dcha (Z-31.2528)
 Mesa lzda: Union mesa-lav lzda (Z-31.2534)



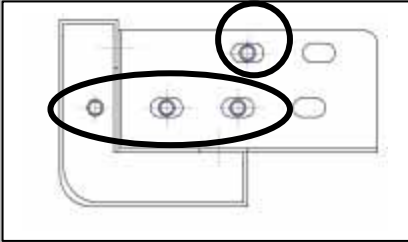
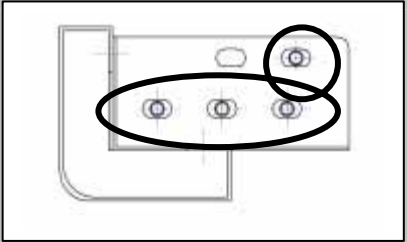
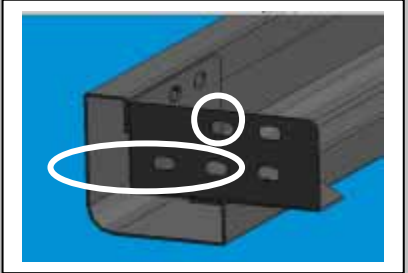
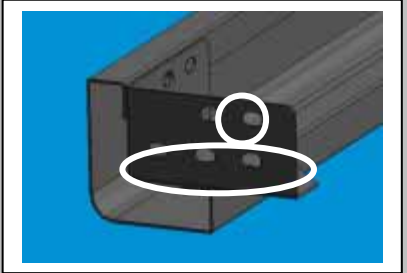
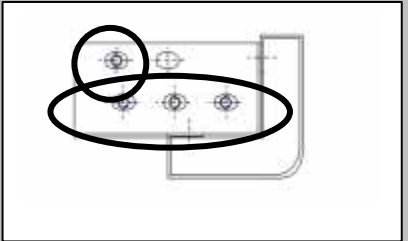
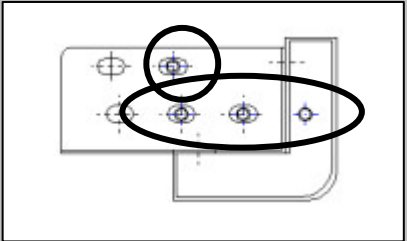
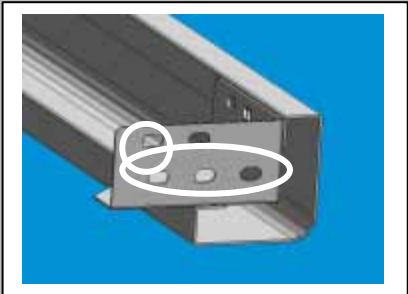
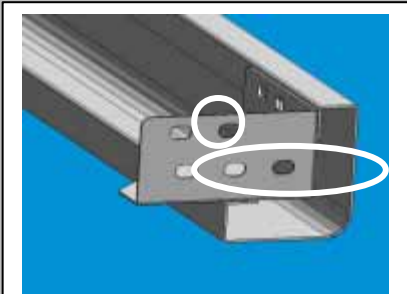
Anarre mesa 180° al Lavavajillas y al Empalme :

- Tornillo exag. M6x10
- Arandela A6
- Arandela Grower A6
- Tuerca sombrero M6



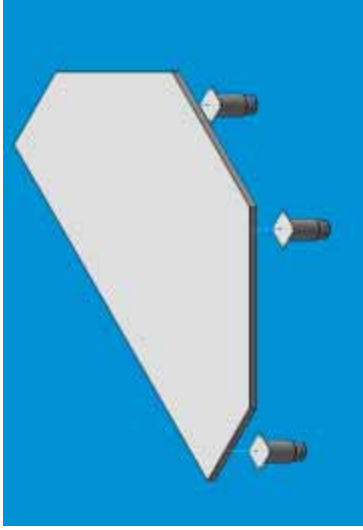
Salida del aparato en alzado (versión lzda.)

POSICIONAMIENTO DE LOS PERNOS DE LA UNION DE LAS PATAS CON LA MESA DE 180°

	SIN TUNEL DE SECADO	CON TUNEL DE SECADO
PATA INTERIOR		
		
PATA EXTERIOR		
		

PRINCIPALES PASOS A SEGUIR PARA EL MONTAJE DE LA MESA DE 180°

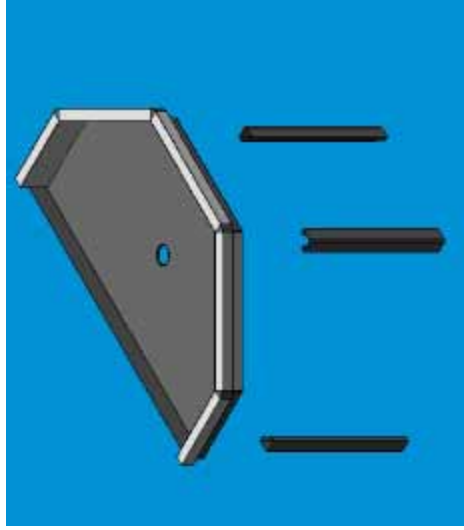
1°



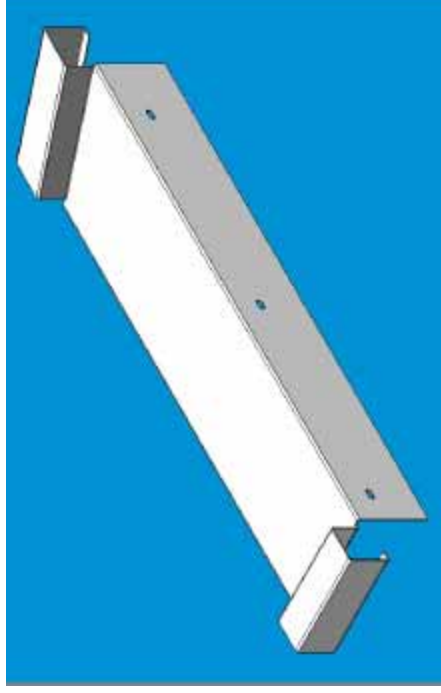
3°



2°

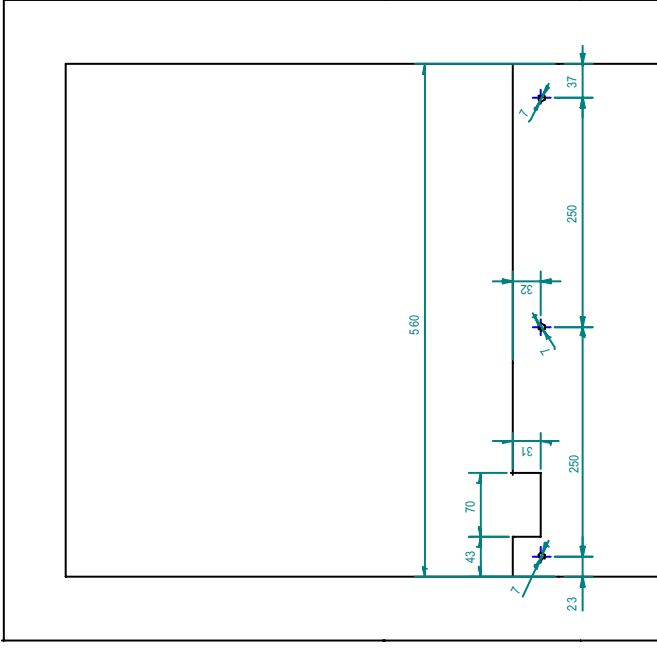
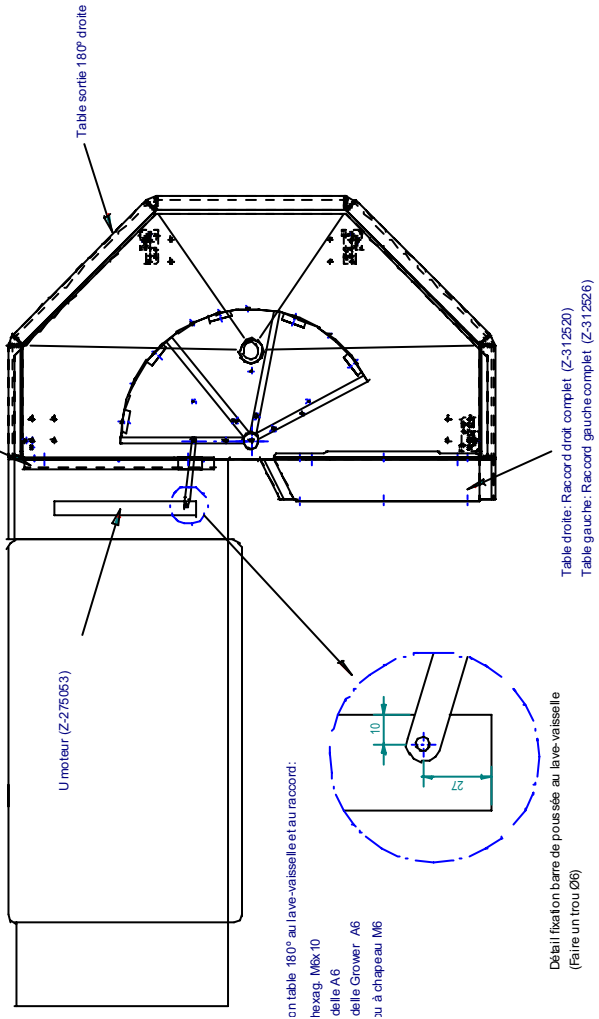
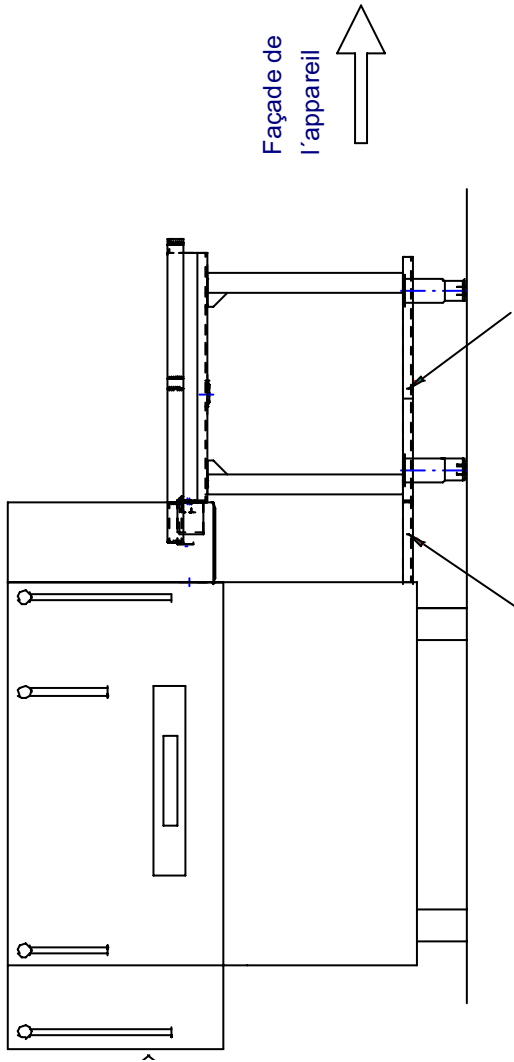


4°

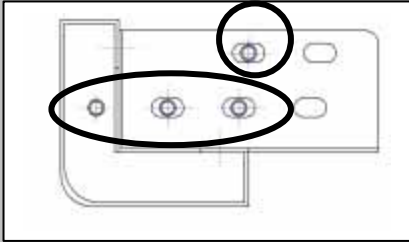
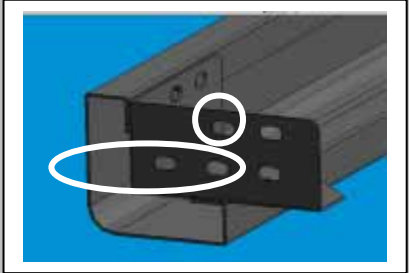
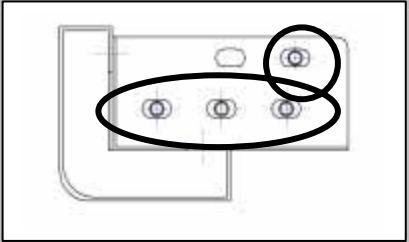
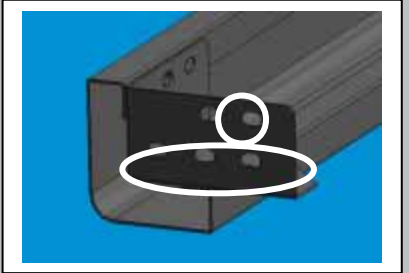
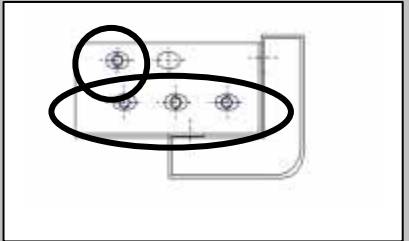
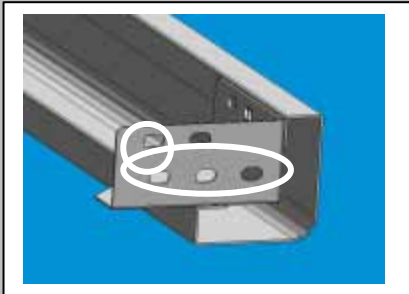
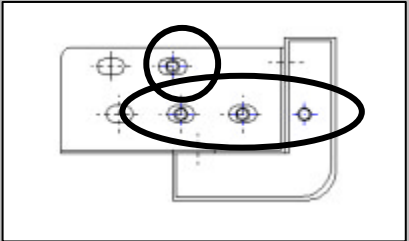
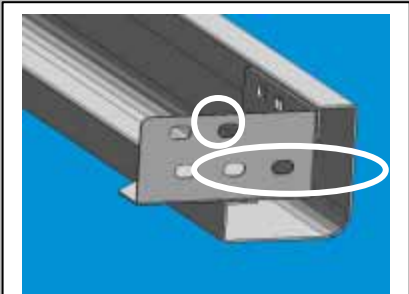


LISTA DE PIEZAS INCLUIDAS EN EL KIT DE INSTALACIÓN DE LA MESA DE 180°

REF.	DENOMINACIÓN	DCHA. T.S 1210309012	DCHA. 1210309014	IZDA. T.S. 1210309011	IZDA. 1210309013
Z272550000	MESA 180° COMPLETA	1	1	1	1
Z312504000	PATA MESA 90° COMPLETA	3	3	3	3
Z312519000	AMARRE PATA MESA 90°	3	3	3	3
Z312526000	EMAPLME IZDO. 90° COMPLETO	-	-	1	1
X260151000	PATA REGULABLE	3	3	3	3
Z702101000	TUERCA R.11/2 DERLIN	1	1	1	1
Z272598000	BANDEJA COMPL. 180° T.S.	1	-	1	-
Z312538000	BANDEJA T.S.	-	1	-	1
Z312534000	UNION MESA LAVAVAJ. IZDA.	-	-	1	1
Z272581000	BARRA DE IMPULSIÓN	1	1	1	1
Z272582000	SUPLEMENTE IZDO. MESA 180°	-	-	1	1
Z272584000	INSTALACIÓN MESA 180°	1	1	1	1
Z312520000	EMPALME DCHO. 90° COMPLETO	1	1	-	-
Z312528000	UNION MESA LAVAVAJ.DCHO.	1	1	-	-
Z272583000	SUPLEMENTO DCHO 180°	1	1	-	-
Q032041000	TORN. ALOM. M6X10	9	9	9	9
Q232040000	ARANDELA A6	11	11	11	11
Q262040000	ARAND. GROW. A6 A304	11	11	11	11
Q212040000	TUER. SOMB. M6	9	9	9	9
Q162030000	TUER. EXA. M5	12	12	12	12
Q242030000	ARAND. ABAN. A5 A.304	12	12	12	12
Q012031000	TORN. EXA. M5X10 A 304	12	12	12	12
Q232050000	ARANDELA A8	10	10	10	10
Q212031000	TORN. AVELL. M5X10 A.304	8	8	8	8
Q212031000	TUER. SOMB. M5	8	8	8	8
Q262030000	ARAND. GROW. A5 304	8	8	8	8

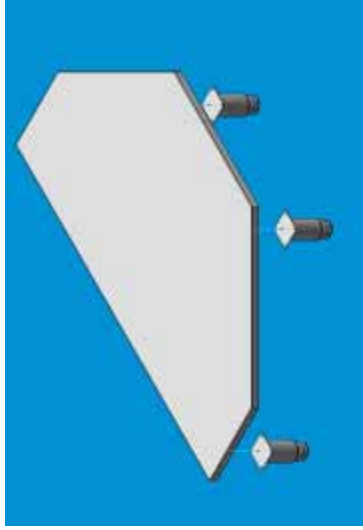


**PLACER DES VISE SOUDÉ DE L'UNION DES PIEDS
AVEC LA TABLE DE 180°**

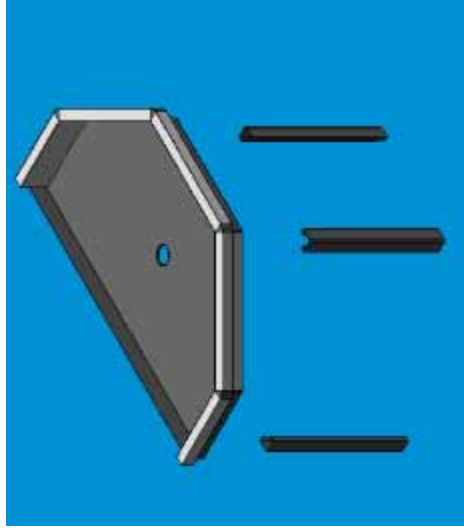
	SANS Tunnel de séchage	AVEC Tunnel de séchage
PIED INTÉRIEUR	 	 
PIED EXTÉRIEUR	 	 

INSTRUCTIONS POUR LE MONTAGE DE LA TABLE DE 180°

1°



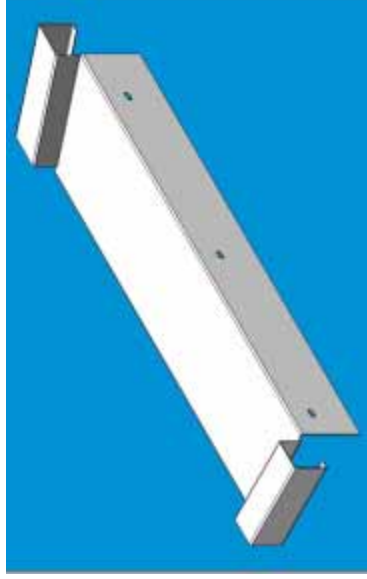
2°



3°

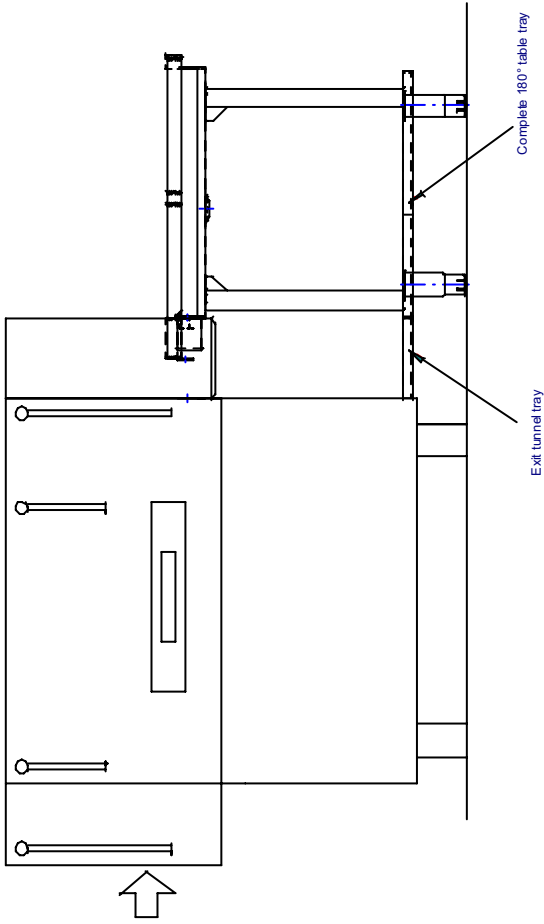


4°

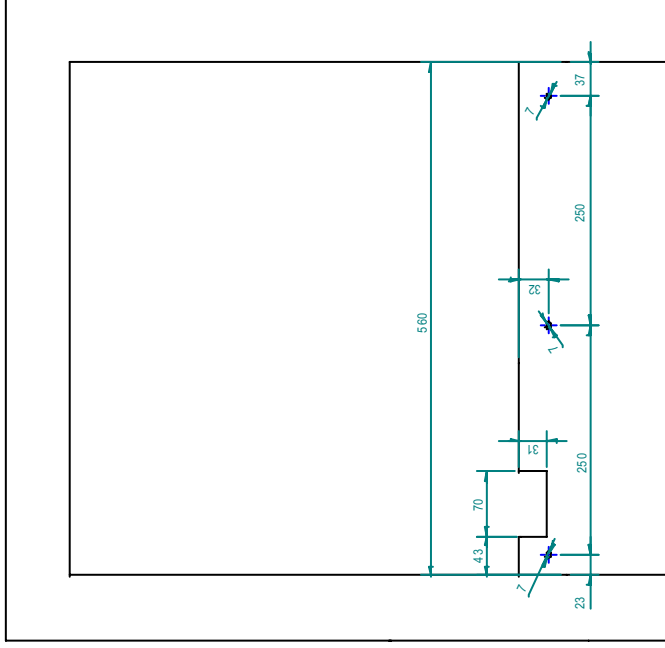
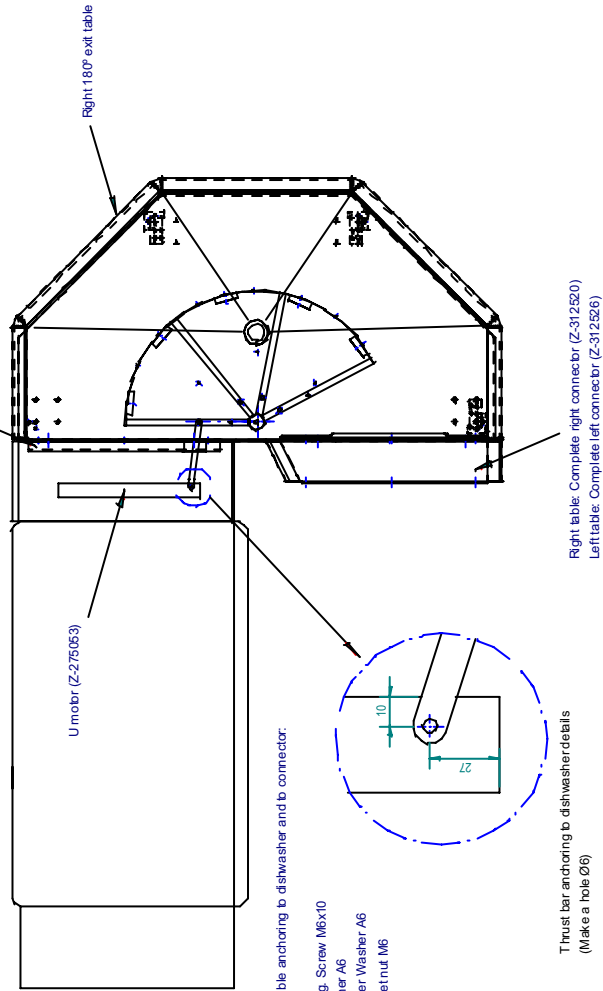


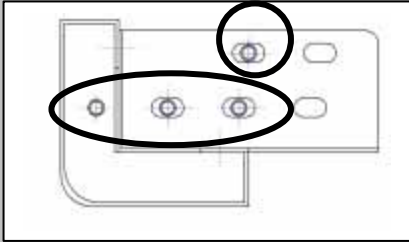
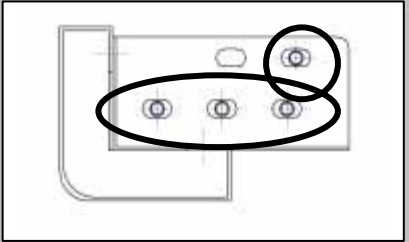
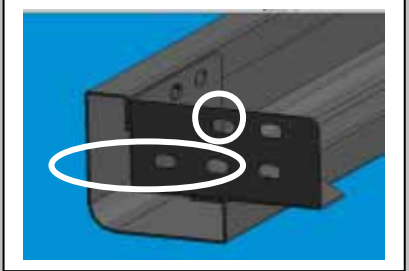
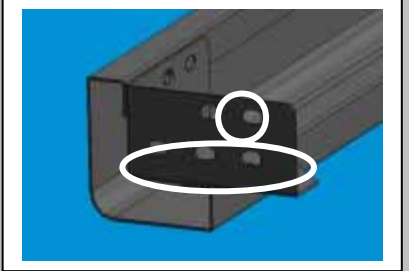
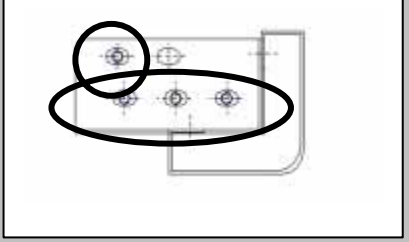
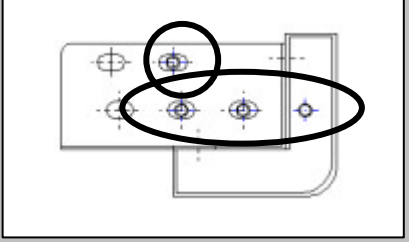
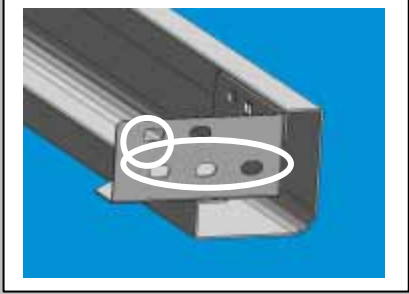
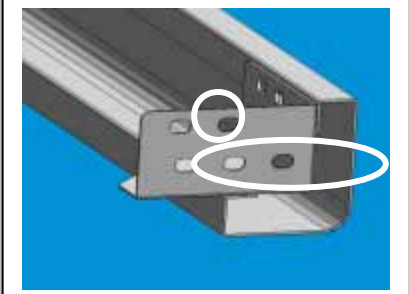
LISTE DES PIÈCES INCLUSES DANS LE KIT D'INSTALLATION DE LA TABLE À 180°

RÉF.	DÉNOMINATION	DROITE T.S 1210309012	DROITE 1210309014	GAUCHE T.S. 1210309011	GAUCHE 1210309013
Z272550000	TABLE 180° COMPLÈTE	1	1	1	1
Z312504000	PIED TABLE 90° COMPLÈTE	3	3	3	3
Z312519000	FIXATION PIED TABLE 90°	3	3	3	3
Z312526000	RACCORD GAUCHE 90° COMPLET	-	-	1	1
X260151000	PIED RÉGLABLE	3	3	3	3
Z702101000	ÉCROU F.1 1/2 DERLIN	1	1	1	1
Z272598000	GRILLE COMPL. 180° T.S.	1	-	1	-
Z312538000	GRILLE T.S.	-	1	-	1
Z312534000	JONCTION TABLE-LAVE-V. GAUCHE	-	-	1	1
Z272581000	BARRE DE POUSSÉE	1	1	1	1
Z272582000	SUPPLÉMENT GAUCHE TABLE 180°	-	-	1	1
Z272584000	INSTALLATION TABLE 180°	1	1	1	1
Z312520000	RACCORD DROIT 90° COMPLET	1	1	-	-
Z312528000	JONCTION TABLE-LAVE-V. DROITE	1	1	-	-
Z272583000	SUPPLÉMENT DROIT 180°	1	1	-	-
Q032041000	VIS T. BOMB. M6X10	9	9	9	9
Q232040000	RONDELLE A6	11	11	11	11
Q262040000	ROND. GROW. A6 A304	11	11	11	11
Q212040000	ÉCROU CHAP. M6	9	9	9	9
Q162030000	ÉCROU HEXA. M5	12	12	12	12
Q242030000	ROND. ÉVENT. A5 A.304	12	12	12	12
Q012031000	VIS HEXA. M5X10 A 304	12	12	12	12
Q232050000	RONDELLE A8	10	10	10	10
Q212031000	VIS T. FRAIS. M5X10 A.304	8	8	8	8
Q212031000	ÉCROU CHAP. M5	8	8	8	8
Q262030000	ROND. GROW. A5 304	8	8	8	8



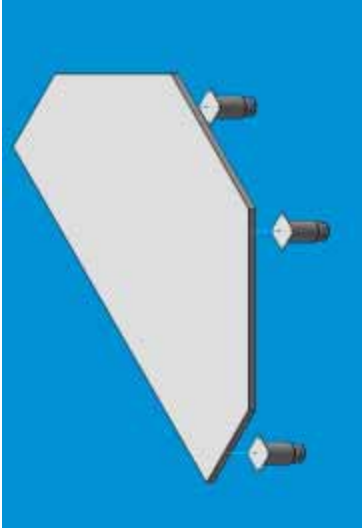
Right table: Right attachment table-dishwasher (Z-312528)
 Left: Left attachment table-dishwasher (Z-312534)



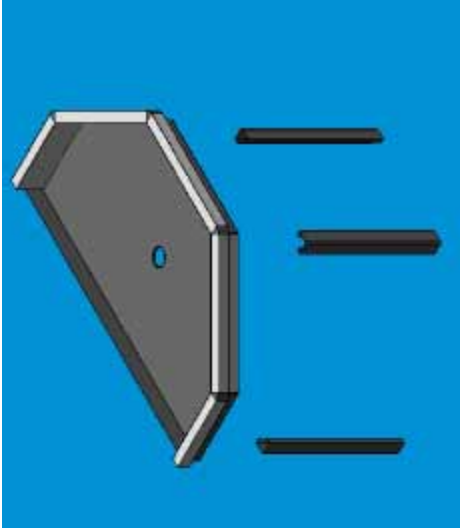
POSITION THE FASTENERS OF THE UNION BETWEEN THE LEGS AND THE TABLE OF 180°		
	WITHOUT DRYING TUNNEL	WITH DRYING TUNNEL
INTERIOR LEG		
		
EXTERNAL LEG		
		

MAIN STEPS FOR THE ASSEMBLY OF THE TABLE OF 180°

1°



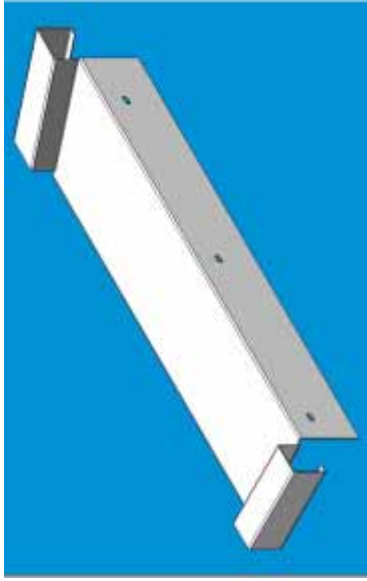
2°



3°

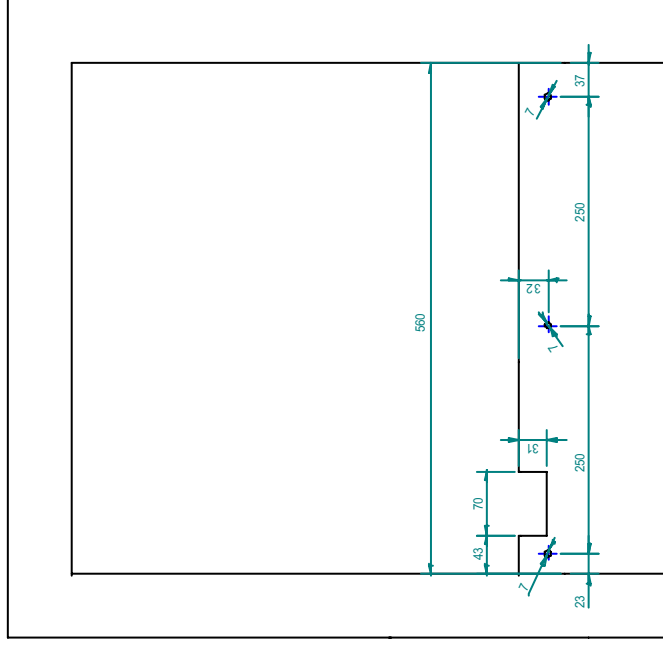
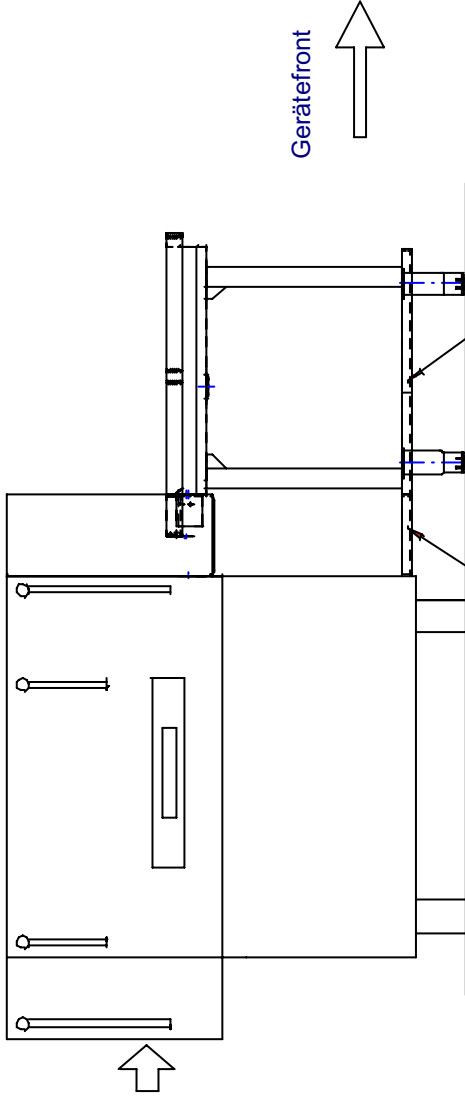


4°

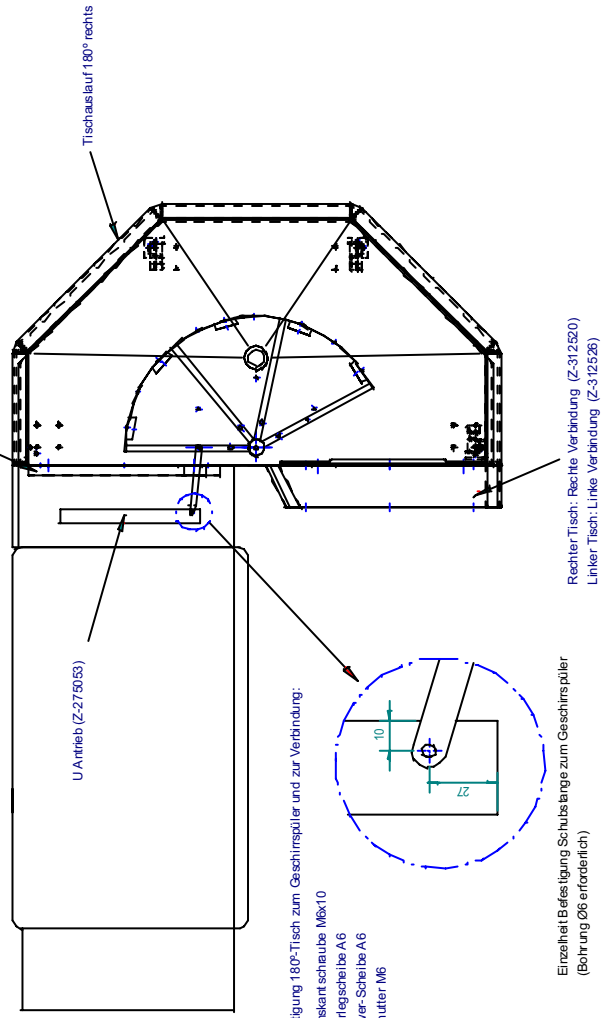


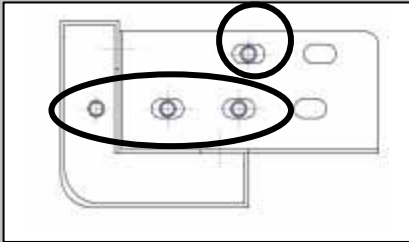
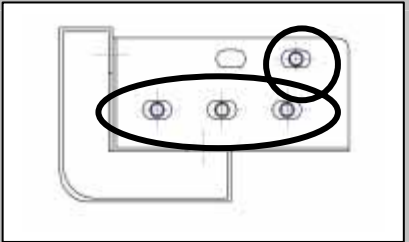
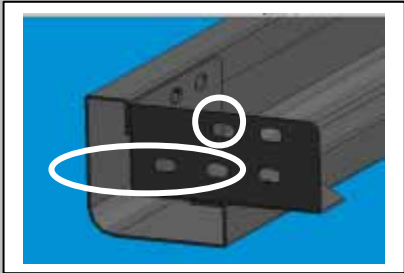
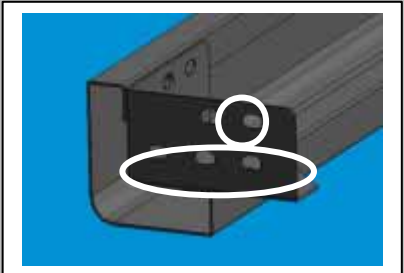
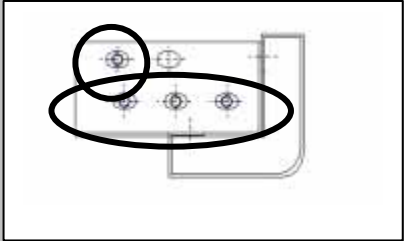
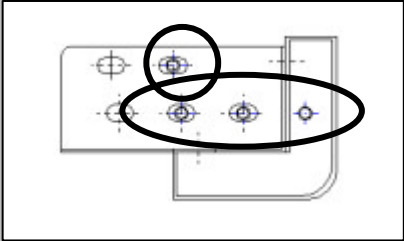

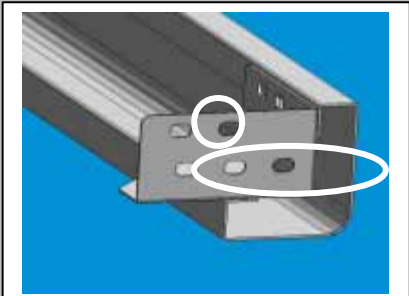
LIST OF PARTS INCLUDED IN 180° TABLE INSTALLATION KIT

REF.	DENOMINATION	D.T. RIGHT 1210309012	LEFT 1210309014	D.T. RIGHT 1210309011	LEFT 1210309013
Z272550000	COMPLETE 180° TABLE	1	1	1	1
Z312504000	COMPLETE 90° TABLE LEG	3	3	3	3
Z312519000	90° TABLE LEG ANCHORING	3	3	3	3
Z312526000	COMPLETE 90° LEFT CONNECTOR	-	-	1	1
X260151000	ADJUSTABLE LEG	3	3	3	3
Z702101000	1 THREAD 1/2 DERLIN NUT	1	1	1	1
Z272598000	D.T. 180° COMPLETE TRAY	1	-	1	-
Z312538000	D.T. TRAY	-	1	-	1
Z312534000	LEFT TABLE-DISHWASHER CONNECTOR	-	-	1	1
Z272581000	THRUST BAR	1	1	1	1
Z272582000	180° TABLE LEFT SUPPLEMENT	-	-	1	1
Z272584000	180° TABLE INSTALLATION	1	1	1	1
Z312520000	COMPLETE 90° RIGHT CONNECTOR	1	1	-	-
Z312528000	RIGHT TABLE-DISHWASHER CONNECTION	1	1	-	-
Z272583000	180° RIGHT SUPPLEMENT	1	1	-	-
Q032041000	CURVE BACKED SCREW M6X10	9	9	9	9
Q232040000	WASHER A6	11	11	11	11
Q262040000	GROWER WASHER A6 A304	11	11	11	11
Q212040000	BONNET SCREW M6	9	9	9	9
Q162030000	HEX. SCREW M5	12	12	12	12
Q242030000	FAN-TYPE WASHER A5 A.304	12	12	12	12
Q012031000	CURVE BACKED SCREW M5X10 A 304	12	12	12	12
Q232050000	WASHER A8	10	10	10	10
Q212031000	COUNTERSUNK SCREW M5X10 A.304	8	8	8	8
Q212031000	BONNET SCREW M5	8	8	8	8
Q262030000	GROWER WASHER A5 304	8	8	8	8



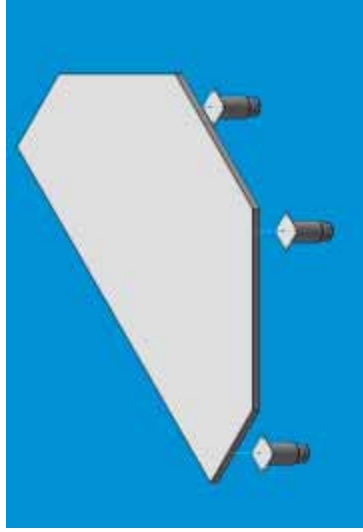
Geräteauslauf (linke Ausführung)



POSITIONIERUNG DER VERBINDUNGSBOLZEN FÜR DIE BEINE AM TISCH DES GESCHIRRSPÜLERS BEI 180°		
	OHNE TROCKENTUNNEL	MIT TROCKENTUNNEL
INNERE FUß		
		
EXTERNE FUß		
		

**HAUPT BETRIEBUNGSVORSCHRIFTE FÜR DIE ZUSAMMENBAU DES 180°
TISCHES**

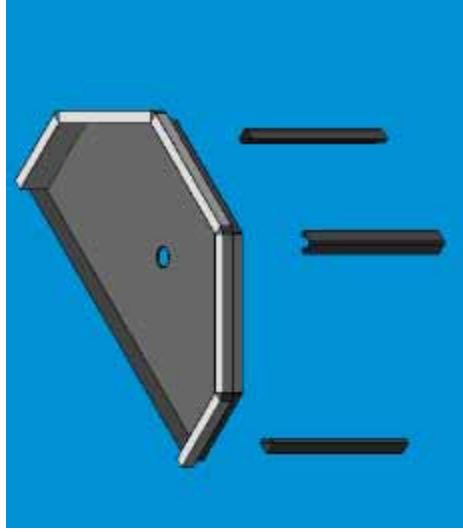
1°



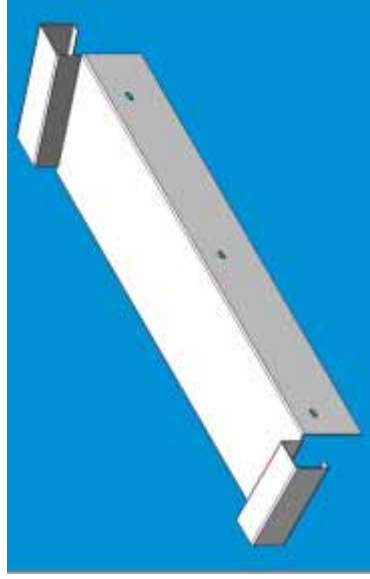
3°



2°

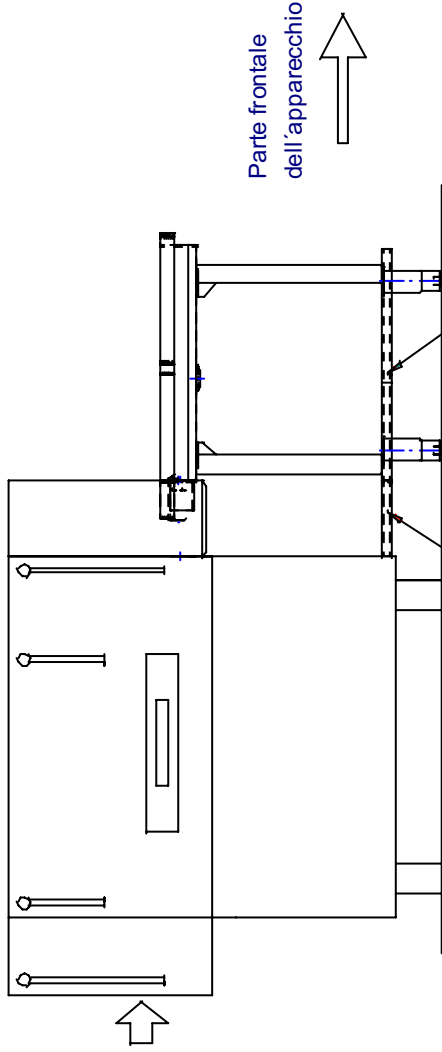


4°

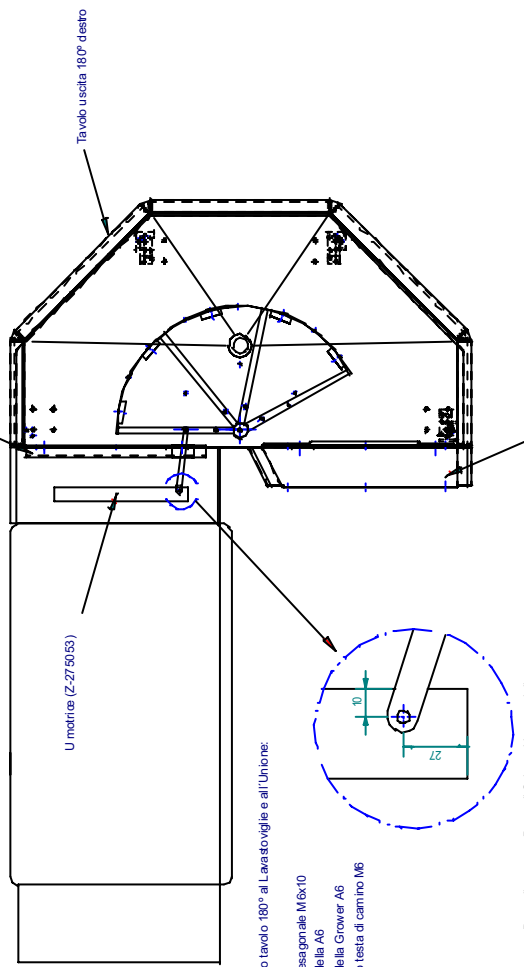


IM INSTALLATIONSPACK FÜR DEN 180°-TISCH ENTHALTENE TEILE

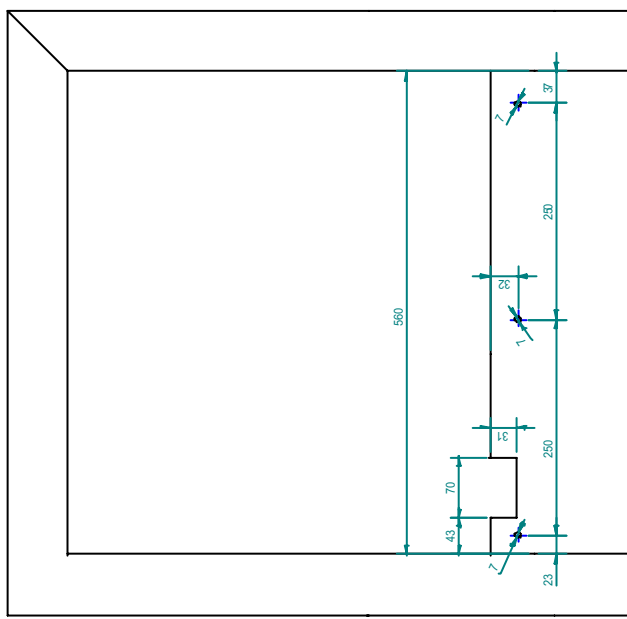
NR.	BENENNUNG	RECHTS T.S. 1210309012	RECHTS 1210309014	LINKS T.S. 1210309011	LINKS 1210309013
Z272550000	180°-TISCH KOMPLETT	1	1	1	1
Z312504000	BEIN 90°-TISCH, KOMPLETT	3	3	3	3
Z312519000	BEFESTIGUNG BEIN 90°-TISCH	3	3	3	3
Z312526000	VERBINDUNGSELEMENT LINKS 90° KOMPLETT	-	-	1	1
X260151000	HÖHENVERSTELLBARER FUSS	3	3	3	3
Z702101000	MUTTER 1 1/2 DERLIN	1	1	1	1
Z272598000	EINSCHUB KOMPLETT 180° T.S.	1	-	1	-
Z312538000	EINSCHUB T.S.	-	1	-	1
Z312534000	VERBINDUNG TISCH GESCHIRRSPÜLER LINKS	-	-	1	1
Z272581000	ANTRIEBSSTANGE	1	1	1	1
Z272582000	ERWEITERUNG LINKS 180°-TISCH	-	-	1	1
Z272584000	INSTALLATION 180°-TISCH	1	1	1	1
Z312520000	VERBINDUNGSELEMENT RECHTS 90° KOMPLETT	1	1	-	-
Z312528000	VERBINDUNG TISCH-GESCHIRRSPÜLER RECHTS	1	1	-	-
Z272583000	ERWEITERUNG RECHTS 180°	1	1	-	-
Q032041000	SENKKOPFSCHRAUBE M6X10	9	9	9	9
Q232040000	UNTERLEGSCHEIBE A6	11	11	11	11
Q262040000	GROWER-SCHEIBE A6 A304	11	11	11	11
Q212040000	HUTMUTTER M6	9	9	9	9
Q162030000	SECHSKANTSCHRAUBE M5	12	12	12	12
Q242030000	FEDERSCHEIBE A5 A.304	12	12	12	12
Q012031000	SECHSKANTSCHRAUBE M5X10 A 304	12	12	12	12
Q232050000	UNTERLEGSCHEIBE A8	10	10	10	10
Q212031000	SENKKOPFSCHRAUBE M5X10 A.304	8	8	8	8
Q212031000	HUTMUTTER M5	8	8	8	8
Q262030000	GROWER-SCHEIBE A5 304	8	8	8	8



Ripiano completo tavolo 180°
 Tavolo destro: unione tavolo-lav. destro (Z-31.2528)
 Tavolo sinistro: unione tavolo-lav. sinistro (Z-31.2534)



- Attacco tavolo 180° al Lavastoviglie e all'Unione:
- Vite esagonale M8x10
 - Rondella AG
 - Rondella Grower AS
 - Dado testa di camino M6

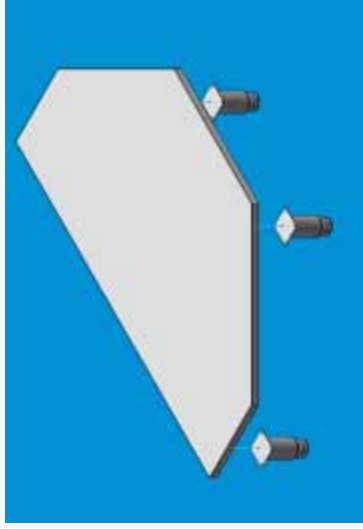


Uscita dell'apparecchio e vista (versione sinistra)

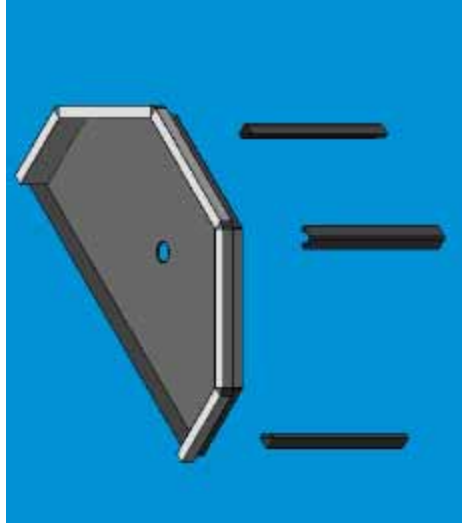
POSIZIONAMENTO DEI PERNI DELL'UNIONE DELLE PIEDE COL TAVOLO DI 180°		
	SENZA TÚNEL DI ASCIUGATURA	CON TUNNEL DI ASCIUGATURA
PIEDE INTERNO		
PIEDE ESTERNO		

PRINCIPALI PASSI A SEGUIRE PER IL MONTAGGIO DEL TAVOLO DI 180°

1°



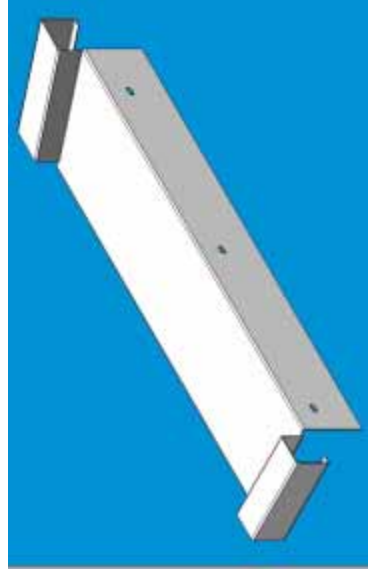
2°



3°



4°



ELENCO PEZZI INCLUSI NEL KIT DI INSTALLAZIONE DEL TAVOLO A 180°

RIF.	DENOMINAZIONE	DESTRO T.A. 1210309012	DESTRO 1210309014	SINISTRO T.A. 1210309011	SINISTRO 1210309013
Z272550000	TAVOLO 180° COMPLETO	1	1	1	1
Z312504000	PIEDE TAVOLO 90° COMPLETO	3	3	3	3
Z312519000	ATTACCO PIEDE TAVOLO 90°	3	3	3	3
Z312526000	ATTACCO SINISTRO 90° COMPLETO	-	-	1	1
X260151000	PIEDE REGOLABILE	3	3	3	3
Z702101000	DADO F.11/2 DERLIN	1	1	1	1
Z272598000	RIPIANO COMPL. 180° T.A.	1	-	1	-
Z312538000	RIPIANO T.A.	-	1	-	1
Z312534000	UNIONE TAVOLO- LAVAST. SINISTRA	-	-	1	1
Z272581000	BARRA SPINTA	1	1	1	1
Z272582000	SUPPLEMENTO SINISTRO TAVOLO 180°	-	-	1	1
Z272584000	INSTALLAZIONE TAVOLO 180°	1	1	1	1
Z312520000	UNIONE DESTRA 90° COMPLETA	1	1	-	-
Z312528000	UNIONE TAVOLO- LAVAST. DESTRA	1	1	-	-
Z272583000	SUPPLEMENTO DESTRO 180°	1	1	-	-
Q032041000	VITE BOMBATA M6X10	9	9	9	9
Q232040000	RONDELLA A6	11	11	11	11
Q262040000	RONDELLA GROW. A6 A 304	11	11	11	11
Q212040000	DADO TESTA DI CAM. M6	9	9	9	9
Q162030000	VITE. ESAG. M5	12	12	12	12
Q242030000	ROND. VENT. A5 A 304	12	12	12	12
Q012031000	VITE. ESAG. M5X10 A304	12	12	12	12
Q232050000	RONDELLA A8	10	10	10	10
Q212031000	VITE. FRES. M5X10 A.304	8	8	8	8
Q212031000	DADO TESTA DI CAM. M5	8	8	8	8
Q262030000	ROND. GROW. A5 304	8	8	8	8