

**GENERAL INSTRUCTIONS FOR INSTALLATION, USE
AND MAINTENANCE**

**INSTRUCCIONES GENERALES PARA INSTALACIÓN,
USO Y MANTENIMIENTO**



GLASSWASHER

Models: LVC – 21 W



Z-408432

0 TABLE OF CONTENTS

0	TABLE OF CONTENTS	I
1	SPECIFICATIONS	1
2	INSTALLATION	2
2.1	VISUAL INSPECTION	2
2.2	INSTALLATION DIAGRAM	2
2.3	DATA PLATE	3
2.4	POSITIONING	3
2.5	WATER INSTALLATION	3
2.6	WATER DRAINAGE	4
2.7	ELECTRICAL CONNECTION	5
2.8	DETERGENT CONTROL	5
3	INSTALLATION CHECKLIST	6
4	USE	7
4.1	USE OF THE APPLIANCE	7
4.2	ADVICE ON HOW TO WASH CORRECTLY	7
5	MAINTENANCE	8
6	TROUBLESHOOTING	9
7	ELECTRICAL DIAGRAM	11
8	WIRING SCHEMATIC	12
9	DETERGENT PUMP INSTALLATION	13
10	RECOMMENDED SPARE PARTS	14

WARNING: Improper installation, adjustment, alteration, service or maintenance can cause property damage, injury or death. Read this manual thoroughly before installing or servicing this equipment. We recommend all service performed by an authorized service technician. Follow the instructions and guidelines to ensure that your warranty remains in effect.

1 SPECIFICATIONS

Model: LVC-21W

PERFORMANCE/CAPACITIES

Capacities

Racks per hr.: 30

Wash Tank: 4gal. / 15.4 liters

Water Consumption / Requirements

Gallons per hr. (Max. use): 20gal. / 75 liters

Gallons per cycles: .64gal. / 2.4 liters

Inlet temperature (Optimum): 140°F / 60°C

Flow rinse pressure: 15 – 25 psi

Wash Pump Motor

Motor (hp): 1/3

Temperatures

Wash: 150°F / 66°C

Rinse: 190°F / 88°C

Heating Elements

Electric wash tank heater: 2 Kw

Electric booster heater: 2.8 Kw

Operating Cycles

Wash time (Seconds): 100

Dwell (Seconds): 5

Rinse time (Seconds): 15

Total Time (Seconds): 120

Dimensions / Shipping

Width: 20" / 508 mm

Depth: 24 1/2" / 622 mm

Height: 34 1/2" / 876 mm

Max clearance for glassware: 10 1/2" / 267mm

Rack: 16" / 400mm

Shipping weight: 105 lbs. / 47.5 kg

Shipping volume (cu. ft.): 10

TECHNICAL SPECIFICATIONS

Total Power Consumption

Volts	Amps	Power (KW)
208/60/1	13.1	2.7
220/60/1	14.7	3.2
240/60/1	15	3.6

Boiler Power Consumption

Volts	Amps	Power (KW)
208/60/1	12	2.5
220/60/1	13.5	3.0
240/60/1	13.75	3.3

Pump Power Consumption

Volts	Amps	Power (KW)
208/60/1	1.10	.23
220/60/1	1.18	.26
240/60/1	1.25	.3

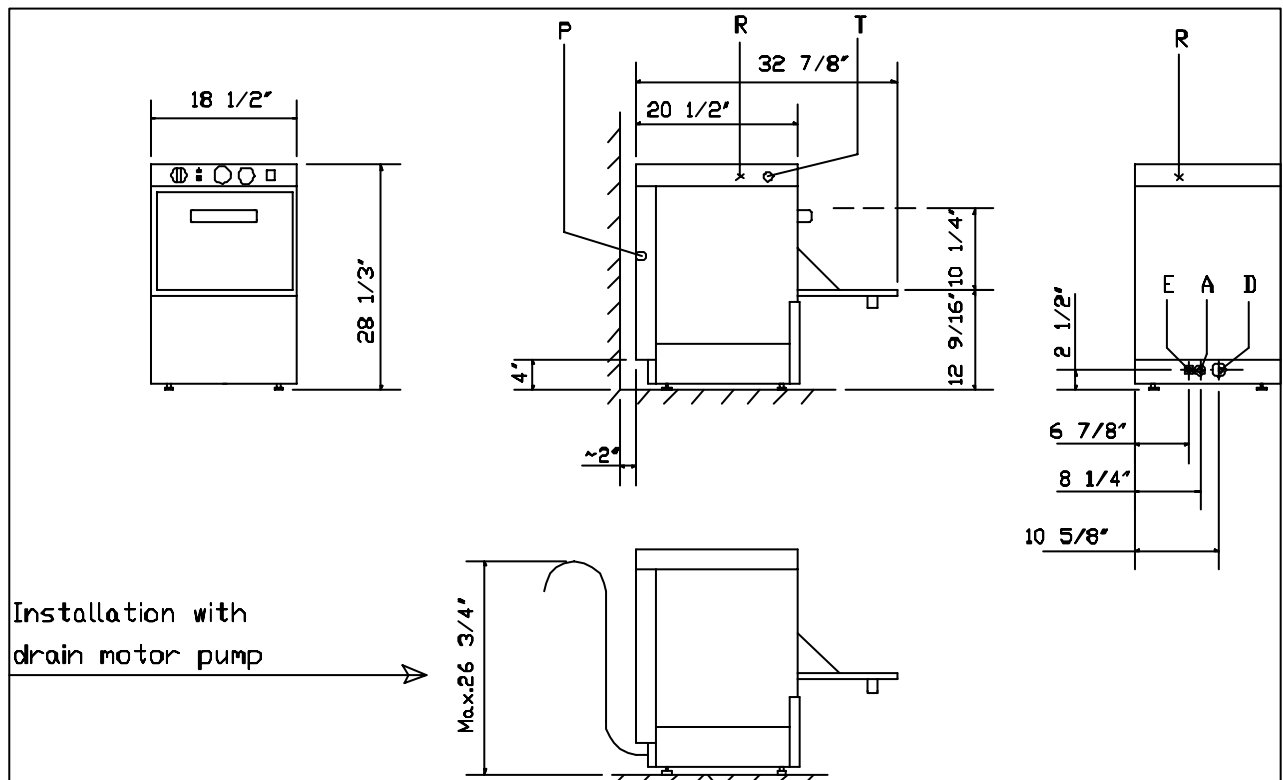
2 INSTALLATION

2.1 VISUAL INSPECTION

Before installing the unit, check the package and machine for damage. All machines have been tested, inspected and packed at the factory and is expected to arrive to you in new, undamaged condition. Visually inspect the exterior of the package. Any damage should be noted and reported to the delivering carrier immediately. If damaged, open and inspect the contents with the carrier.

In the event that the exterior is not damaged, yet upon opening, there is concealed damage to the equipment notify the carrier. Notification should be made verbally as well as in written form. Request an inspection by the shipping company of the damaged equipment. Also, contact the dealer through which you purchased the unit.

2.2 INSTALLATION DIAGRAM



- A = Water inlet
- D = Drain hose
- E = Electrical Cable
- R = Terminal Block

Fig. 1

2.3 DATA PLATE

The data plate is located on one side of the machine. Under no circumstances should the data plate be removed from the unit. The data plate is essential to identify the particular features of your machine and is of great benefit to installers, operators and maintenance personnel. It is recommended that, in the event the data plate is removed, you copy down the essential information in this manual for reference before installation. Any transformations or changes made on the machines during installation should be reflected on the data plate.

2.4 POSITIONING

Leveling and adjusting the height of the appliance is done by turning the leveling stands to the desired height. Ensure that the unit is level before making any connections. (Fig. 2)

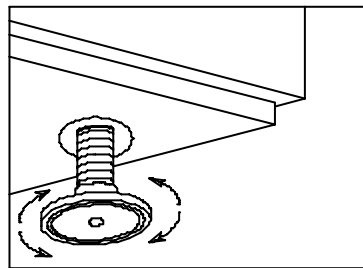
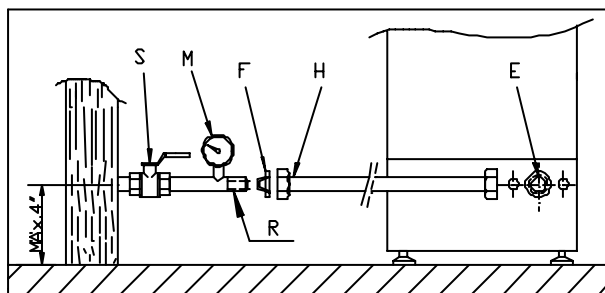


Fig. 2

2.5 WATER INSTALLATION

Water installation is carried out as shown in figures 3 and 4. The hot water line to the glass washer must provide between $20^{\pm 5}$ psi of water pressure. The hot water heater should be set to deliver $\geq 140^{\circ}\text{F}$ ($\geq 60^{\circ}\text{C}$) water temperature to the glass washer for best results. Use $\frac{3}{4}$ " copper tubing inlet line.



- S = Gate Valve
- F = Filter
- H = Hose
- E = Fill valve
- M = Pressure Gauge
- R = $\frac{3}{4}$ " Copper

Fig. 3

CAUTION: Do not confuse static pressure with flow pressure. Static pressure is the line pressure in a “no flow” condition (all valves and services are closed). Flow pressure is the pressure in the fill line when the solenoid valve is opened during the cycle.

THE DISPLAY OF THE PRESSURE GAUGE SHALL BE CLEARLY VISIBLE OF THE OPERATOR OF THE MACHINE. THE GAUGE SHALL HAVE INCREMENTS OF 1 psi (7 kpa) OR SMALLER AND SHALL BE ACCURATE TO ± 2 psi (± 14 kpa) IN THE 15-25 psi (103-172 kpa) RANGE. IF THE GAUGE IS LOCATED UPSTREAM OF THE CONTROL VALVE, IT SHALL BE MOUNTED IN AN ACCESSIBLE VALVE WITH A $\frac{1}{4}$ IN IRON PIPE SIZE CONNECTION.

If the water pressure is less than 20 psi (1.4 kg/cm^2), installation of a water pump is required as shown in Fig. 4. In areas where the pressure fluctuates or is greater than the recommended pressure, it is suggested that a water pressure regulator be installed.

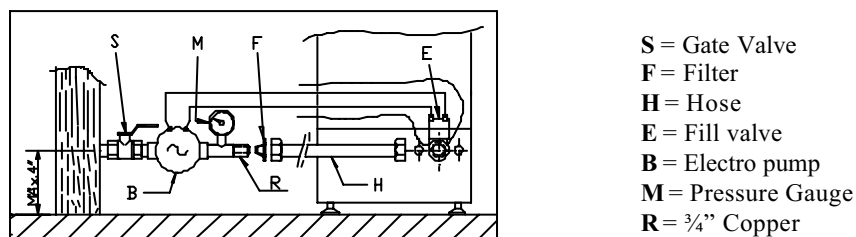


Fig. 4

It is necessary to remove all foreign debris from the water line that may potentially get trapped in the valves or cause an obstruction, prior to connecting to the machine.

Use only the supplied hoses ($\frac{3}{4}$ " Female hose connector) at the water connections. Failure to do so may result in damage to the solenoid valve threads and leaking. Tighten by hand. Connect the bent side of the hose to the machine. Adaptor supplied for $\frac{3}{4}$ " female garden hose connection.

For hard water supplies with a hardness of over 2 grains or 10°F and ph beyond the range of 7.0 – 8.5, a water conditioner must be installed.

Slowly turn on the water supply to the machine after the incoming fill line and the drain line have been installed. Check for any leaks and repair as required. All leaks must be repaired prior to placing the machine in operation.

2.6 WATER DRAINAGE

Attach the drain hose as shown in Fig. 5. It is recommended to affix a siphon pipe to prevent odors. All piping from the machine to the drain must be a minimum 1-1/2" I.P.S. There should also be an air gap between the machine drain line and the drain. For natural overflow efficiency use floor drain.

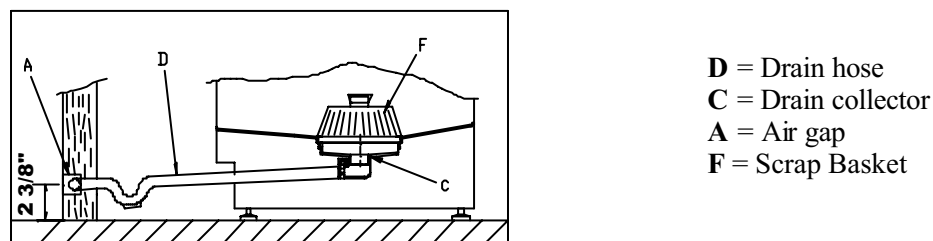


Fig. 5

2.7 ELECTRICAL CONNECTION

- To access to the electrical connection block (R) (Fig. 1), remove the top cover (T) (Fig. 1) and the rear panel (P) (Fig. 1). Connect the wires as shown in figure 6. Insert the power cord through the cord holder (E) (Fig. 1) and make sure to leave enough cable to remove the electrical panel from the front for service. Tighten the connections.
- Leave free $\geq 39''$ (≥ 1000 mm) of power cord from the rear to facilitate cleaning of the location of the glass-washer.
- Install a circuit breaker according to required consumption guidelines (Page 1) and data plate.
- The machine must be grounded.

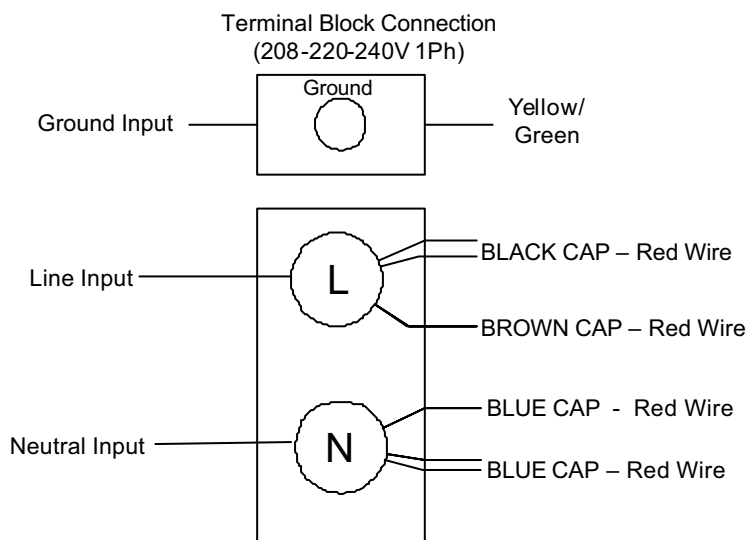


Fig. 6

WARNING: Electrical Shock Hazard

It is the personal responsibility and obligation of the customer to contact a qualified electrician to assure that the electrical installation is adequate and is in conformance with the National Electrical Code, ANSI / NFPA 70 – latest edition and all local codes and ordinance.

2.8 DETERGENT CONTROL

Use commercial grade detergent low suds. Fagor doesn't recommend any specific brand name of chemicals. Contact your local chemical distributor for questions concerning these subjects.

All machines come equipped with integral rinsing dispenser and tube. Detergent dispenser is optional. See instructions in this manual to install a detergent dispenser, INCLUDING A VISUAL MEANS TO VERIFY THAT DETERGENTS ARE DELIVERED OR A VISUAL OR AUDIBLE ALARM TO SIGNAL IF DETERGENTS ARE NOT AVAILABLE FOR DELIVERY TO THE RESPECTIVE WASHING SYSTEMS.

3 INSTALLATION CHECKLIST

CHECK OFF THE FOLLOWING ITEMS AS THEY ARE COMPLETED BEFORE PROCEEDING TO OPERATE OR SERVICE THE GLASSWASHER.

- Has the glasswasher been checked for concealed/hidden damage?
- Has the glasswasher been properly leveled?
- Has the service voltage been checked to ensure that it meets the requirements listed on the dishwashing machine data plate?
- Has the glasswasher circuit breaker/service breaker been sized correctly, given the glasswasher's amperage requirements?
- Has the glasswasher been properly grounded?
- Is the water valve open?
- Is the incoming water supply at 20 - 40 psi?
- Is the incoming water supply line at 3/4" - minimum?
- Has been installed with the supplied water hose?
- Is the water hose not kinked?
- Has the incoming water supply been flushed for debris?
- Is the hot water supply at the minimum recommended temperature as indicated on the glass washer plate (140°F)
- Is the water hardness =2.0gpg/34.2ppm and PH level 7 - 8.5ph?
- Has the drain plumbing been installed according to the instructions in this manual?
- Is the drain hose not kinked?
- Is the overflow tube with the O-ring fitted in its position inside the tank

MODEL NO. _____

SERIAL NO. _____

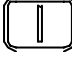

INSTALLATION DATE _____

SERVICE REP. NAME _____


PHONE N° _____

4 USE

4.1 USE OF THE APPLIANCE

- When selector knob (1), Fig. 8, is set at  the pilot light (2) comes on. The rinse and wash water will start to fill. Upon completion of the fill cycle the pressure valve switches position sending power to the operating t-stat at this time the booster begins to heat the rinse water to a temperature of (185°F +/- 5°). Once temperature is achieved the operating t-stat switches position to the tank element this will heat the wash water to (150°F +/- 5°). Once both rinse and wash temperature are met, the machine is ready to wash. Check temperatures on gauges: (5) for rinsing and (3) for washing.
- Start the wash cycle by pressing (4) start switch. Wash cycle lasts 2 minutes. Note that the switch will be illuminated for the duration of the cycle.
- To empty the tank completely, remove the overflow tube located in the tank(A)(Fig. 10), set switch (1) to  and press button (4) (Fig. 8). ***DON'T REMOVE THE ROUND SCRAP BASKET, ONLY THE TUBE.***
- When the working day is complete set switch (1) to the 0 setting.

Cool rinse

For a cool rinse, turn and hold the switch (1) to the setting  (Fig. 8) for operator's desire amount of time.

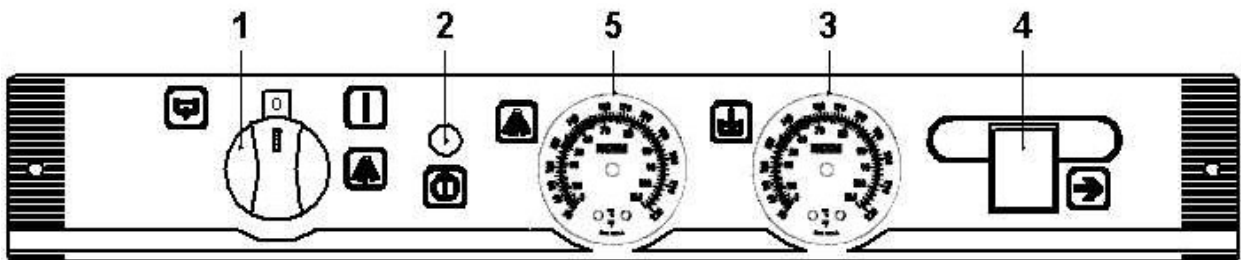


Fig.8

4.2 ADVICE ON HOW TO WASH CORRECTLY

- Control and maintain the level of detergent and rinse aid of the tanks. Keep pipe and filter submerged.

Preparing the glassware

- Remove the big pieces of food from items before putting in the baskets.
- Put glasses in upside down.
- Put dishes in the available accessory for this purpose.
- Put cutlery in the cutlery baskets handles down. Spoons, knives and forks can be mixed.
- Put the special cutlery baskets in the base basket.

5 MAINTENANCE

Regular wiping of the outside surface with a soft, damp sponge or cloth and mild detergent is all that is necessary to maintain the appearance of your glass washer.

- Check the rinse aid dispenser from time to time and refill when necessary.
- Clean scrap basket (F) (Fig.10) everyday. To do this; remove the anti-overflow device (A), turn scrap basket counterclockwise and lift (F). Replace the clean scrap basket (F) by putting the grooves into the slots and turning clockwise (Fig. 10).
- If the machine is not going to be used for a long period of time, coat surfaces with petroleum jelly.

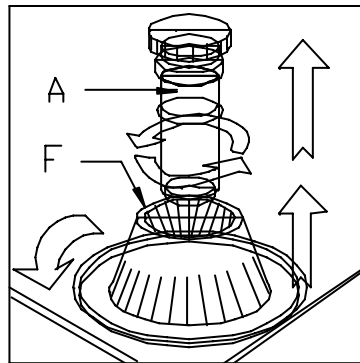


Fig. 10

Optional accessories

The manufacturer has the following optional accessories which can be fitted to the machine.

- External electric water pump; to increase water pressure.
- Liquid detergent dispenser pump
- Water softener; to treat hard water.

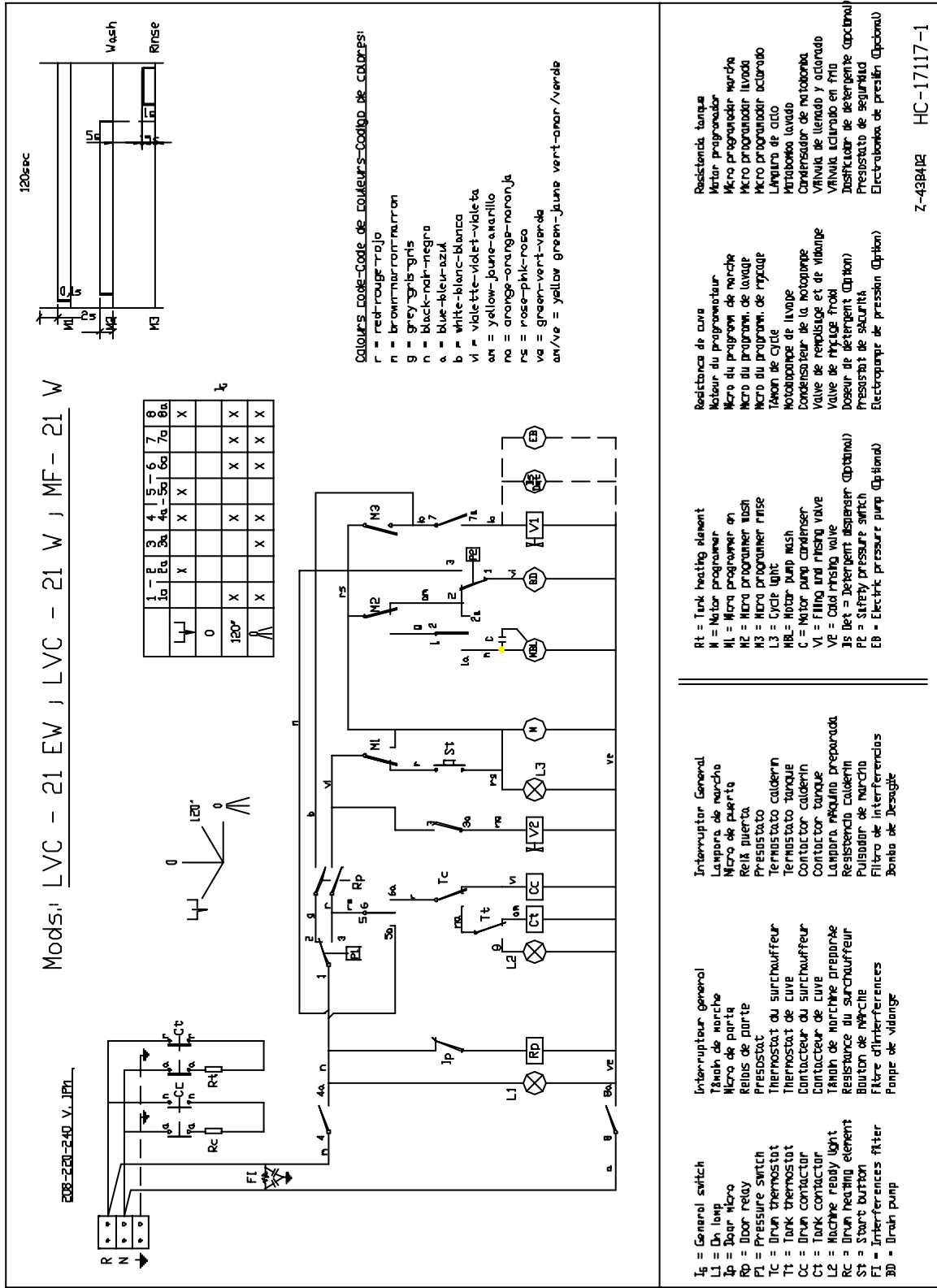
6 TROUBLESHOOTING

First be sure that the “Installation Checklist” in this manual was completed and check out that all the items still remains in effect. For support or further service information contact Fagor Service Department toll free at 1-866-GO-FAGOR (46-32467). The diagnosing, testing and repair of any electrical, mechanical device is to be performed solely by trained service technicians.

SYMPTOM	POSSIBLE CAUSE	ACTION
Glasswasher will NOT FILL after the door is closed. Power “ON” light (L1) is not illuminated.	Service breaker tripped	Reset. If the breaker trips again, contact an electrician to verify amperage or possible short.
	Machine not connected to power source. Faulty power/selecter switch (IG)	Verify input power voltage (220v) Verify the wiring of the switch; if correct, replace the switch. (Position 4-4a / 8-8a)
Glasswasher will NOT FILL after the door is closed. Power “ON” light (L1) is illuminated.	No water to machine.	Verify hose is not blocked or kinked, water valve is open and pressure > 20 PSI.
	Overflow tube not attached or broken or missing O-ring.	Check condition of overflow tube.
	Faulty door switch.	Verify the wiring of the switch; if correct, replace the switch (Ip) or the door relay (Rp)
	Faulty fill pressure switch (P1)	Verify position change 1-2 / 1-3 to pressure switch. Possibly stuck .
	Faulty fill valve (V1)	Verify the wiring and voltage received; if correct replace fill valve.
Glasswasher will NOT RUN after the door is closed. Power “ON” light (L1) is illuminated and unit has completed the filling cycle.	Fill pressure switch’s pipe clogged	Drain the unit, fill again, even manually and run a cycle
	Faulty fill pressure switch (P1)	Verify it changes position of the switch; If not replace it.
	Start button (St) faulty	Verify start button is operating properly. If not replace it.
	Faulty Timer (M)	Verify the timer is rotating (M1, M2 & M3). If not, check to see that the motor is receiving power. If so, replace the timer assembly. Ohm out timer motor leads.
	Faulty wash pump (MBL)	Verify that the wash pump is getting power. If so, replace the pump. Ohm out windings.
Glasswasher RUNS continuously in the wash cycle or not rinse.	Faulty Timer (M)	Verify the timer is rotating (M1, M2 & M3). If not, ohm out timer motor. If open, replace the timer
	Faulty rinse valve (V1)	Verify the wiring and voltage received; if correct, ohm out. If open replace valve.
	No water to machine.	Verify hose is not blocked or kinked, water valve is open and pressure > 20 PSI.

SYMPTOM	POSSIBLE CAUSE	ACTION
Glasswasher FILLS slowly and/or rinse is weak.	Clogged or obstructed rinse arms	Remove and clean rinse arms/nozzles.
	Poor water pressure to machine.	Adjust the water pressure regulator to ensure there is a min 20 PSI flow.
	Hose strainer is clogged	Check strainer or any filters installed.
Glasswasher RUNS. RINSE WATER NOT REACHING REQUIRED TEMPERATURE.	Temperature gauge in front panel is defective.	Check temperature with a calibrated thermometer. Replace temperature gauge if necessary.
	Misadjusted/faulty thermostat (Tc)	Verify operation and setting of thermostat replace if necessary. If thermostat is not receiving voltage, check wiring or replace selector switch (IG)
	Faulty heater relay (Cc)	Verify voltage to relay if ok ,verify the relay closes and opens appropriately.
	Faulty rinse heater (Rc)	Ohm out element check for continuity; if open, replace heater.
Glasswasher RUNS. WASH WATER NOT REACHING REQUIRED TEMPERATURE.	Machine ready light (L2) is blown	Replace light
	Misadjusted/faulty thermostat (Tt)	Verify voltage to t-stat and position change from booster to tank.
	Faulty Heater relay (Ct)	Verify contacts are close when there is voltage to relay also check for stuck or pitted contacts.
	Rinse heater (Rt) faulty	Check element for continuity; if open, replace heater.
Glasswasher RUNS perfectly but NOT DRAINING.	Overflow tube not removed.	Check and remove.
	Drain pump (BD) clogged.	Open drain pump cover and remove debris. (Lower front panel; white removable cover)
	Drain hose kinked	Make sure the drain hose is not kinked
	Faulty drain pump (BD)	Verify drain pump is receiving voltage, if not check pressure switch (P2) for position change.
Dishes are not coming clean.	Machine temperatures / pressure are not up to the minimum requirements.	Verify that incoming water, wash water and rinse water match the required temperatures / pressure.
	No detergent or rinsing liquids.	Refill container with adequate cleaning solutions.
	Improper loading or overloading	Check in manual instructions “how to wash properly”

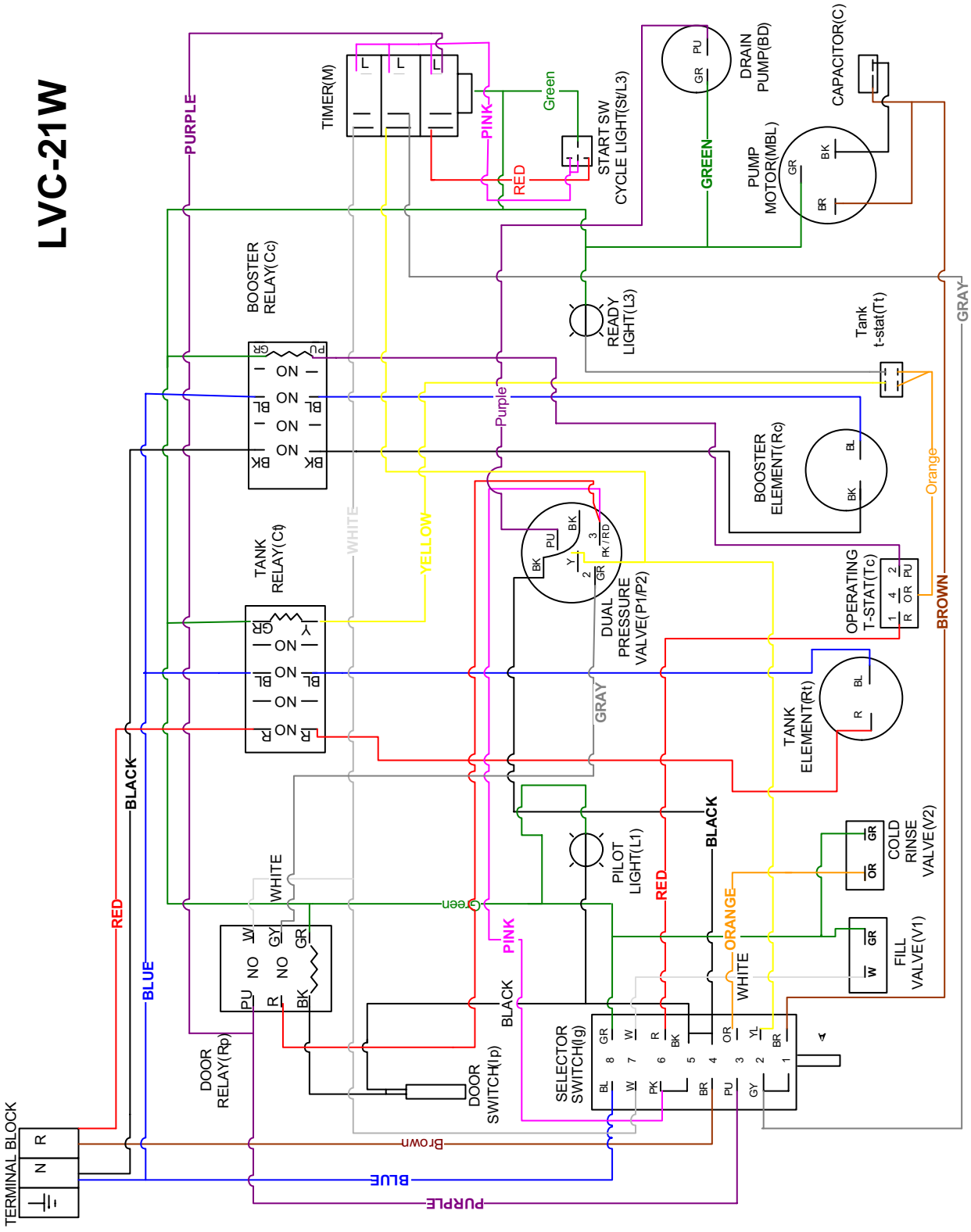
7 ELECTRICAL DIAGRAM



Z-4384R HC-17117-1

8 WIRING SCHEMATIC

LVC-21W



9 DETERGENT PUMP INSTALLATION

- Remove the lower front panel by removing Phillips screws.
- Mount **PUMP (A)** (Fig. 12) onto glass washer lower-front frame with self tapping Phillips screws.
- Locate and connect incoming power to the pump.
Note: The incoming power wires are located within the wire harness (B) (Fig. 12) above the drain pump. One wire will have a clear connector with a white band wrapped around a blue wire and the other will have a green band wrapped around a blue wire. Connect as shown in Fig. 13.
- Drill a 3/8" hole centered above the support bracket (C) (Fig. 12). Assemble and insert plastic injector into the tank. See figure 12 and 14
- Connect plastic hose from the output of the pump to the plastic injector in the tank (Fig. 14).
- Connect plastic hose from the input of the pump (Fig. 14) and feed the hose through a small hole on the bottom-right side of the glass washer (D) (Fig. 12)
- At the other end of the hose, assemble the metallic filter ballast (3) and the filter body (3) (Fig. 14) and immerse the assembly in detergent.
- Regulate the doser to provide the amount of detergent indicated by the manufacturer. The range of the doser is indicated in Fig. 15.

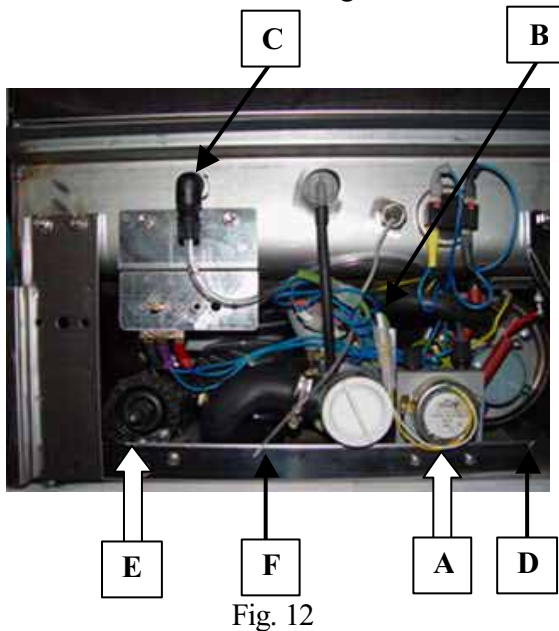


Fig. 12



Fig. 13

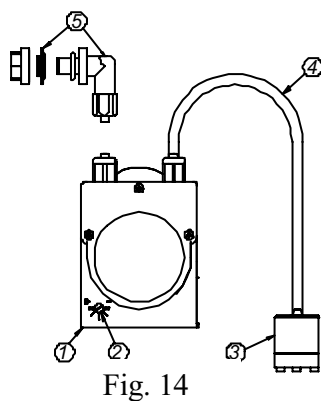


Fig. 14

- | |
|---|
| 1 - Detergent pump |
| 2 - Dozer regulation control |
| 3 - Metallic filter ballast and Filter body |
| 4 - Hose |
| 5 - Plastic injector |

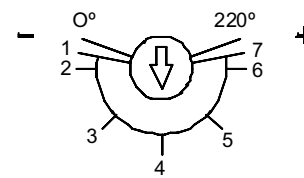


Fig. 15

	gal./h.
1	0
2	0,06
3	0,20
4	0.40
5	0.53
6	0.66
7	0.80

RINSE AID DISPENSER (E) (Fig. 12) and plastic hose are built-in. Feed the hose through a small hole (F) (Fig. 12) on the bottom-center side of the glass washer.

10 RECOMMENDED SPARE PARTS

<i>Part number</i>	<i>Description</i>
P255001	Water fill valve (dual)
R223005	Tank heating element 2000 W.
Z203009	Door switch
Z203062	Door relay
Z211903	Rinsing nozzle
Z213007	Contactator
Z393005	Boiler thermostat
Z400709	Washing nozzle
Z400711	Washing nozzle bracket
Z401001	Pump motor 60Hz.
Z421711	Boiler heating element 2800W.
Z433011	Pressure switch
Z448302	Timer
Z718441	Tank thermostat
Z433001	General selector switch
Z223501	Drain pump
V817100	6 MF Capacitor

FAGOR COMMERCIAL LIMITED WARRANTY

Warranty:

Fagor Commercial, Inc. ("Fagor") warrants to the first-end-user purchaser (the "User") that the Fagor brand equipment sold hereunder, except for parts and accessories which carry the warranty of a supplier (the "Equipment") will be free from defects in material and factory workmanship under normal conditions of use and maintenance for a period of (1) one year from the date of Installation (Warranty Commencement date), but in no event to exceed (15) fifteen months from the date of shipment.

Warranty Coverage:

If there is a defect in material or factory workmanship covered by this Warranty reported to Fagor during the period the applicable Warranty is in force and effect, Fagor will repair or replace, at Fagor's option, that part of the Equipment that has become defective. Fagor will cover labor cost within one year from the Warranty Commencement date or 15 months from shipment date, whichever occurs first with the exception of the Glasswasher models which will be a 90 days labor and one year parts warranty. Fagor shall bear all labor costs in connection with the installation of these replacement parts, provided that, the installation is conducted by Fagor or its authorized representative. Charges for warranty travel time to round trip total of (2) two hours or up to 100 miles total. Any charges exceeding those stated herein must have prior authorization by Fagor.

Parts Warranty Coverage:

Fagor warrants all new machine parts produced or authorized by Fagor to be free from defects in material and workmanship for a period of 90 days from the Warranty Commencement Date. If any defect in material and workmanship is found to exist within the warranty period, Fagor will replace the defective part without charge. Defective parts become the property of Fagor.

Fagor will have no responsibility to honor claims received after the date the applicable Warranty expires. **Notwithstanding the foregoing, any claim with reference to the Equipment or any parts therefore for any cause shall be deemed waived unless submitted by the User to Fagor within thirty (30) days after the date the User discovered, or should have discovered, the claim.** In connection with all claims under this Warranty, Fagor will have the right, at its own expense, to have its representatives inspect the Equipment at the User's premises and to request all of User's records pertaining to the Equipment to determine whether a defect exists, whether the conditions set forth in this Warranty have been satisfied, and whether or not the applicable Warranty is in effect.

Exclusions from and Conditions to Warranty Coverage:

This Warranty does not cover parts or accessories, which (a) carry the warranty of a supplier or (b) are, abused by incorrect (noncommercial) grade detergents. Application of this Warranty is further conditioned upon the following:

- **Installation.** The Equipment must be properly installed in accordance with Fagor's installation procedures and instructions and reviewed and tested by Fagor's authorized representative.
- **No Alteration.** The Equipment must not have been modified or altered from its condition at the date of original installation.
- **Use.** FAGOR EQUIPMENT IS NOT DESIGNED FOR PERSONAL, FAMILY OR HOUSEHOLD PURPOSES, AND ITS SALE FOR SUCH PURPOSES IS NOT INTENDED. IN THE EVENT THE EQUIPMENT IS SO USED, THIS WARRANTY SHALL BE NULL AND VOID, AND THE EQUIPMENT SHALL BE DEEMED TO HAVE BEEN SOLD "AS IS-WHERE IS" WITHOUT ANY WARRANTY OF ANY KIND, INCLUDING WITHOUT LIMITATION ANY WARRANTY OF TITLE, NON-INFRINGEMENT, MERCHANTABILITY OR FITNESS FOR A PARTICULAR PURPOSE.
- **Water Quality.** Water supply should have hardness between .25 and 2.0 grains per gallon, pH level between 7.0 – 8.5 and TDS level at 250 PPM. Equipment failure due to inadequate water supply is not covered by this Warranty.
- **Proper Maintenance and Operation.** The Equipment must be properly maintained and operated in accordance with Fagor's maintenance and operating procedures. All service, labor and parts must be acquired from Fagor or its authorized service representative for the User's area.
- **Minor Parts.** No labor will be associated with the replacement of minor items such as, and not limited to, switches, pilot lights, gauges, fuses, etc. or replacement of wear items such as curtains, squeeze tubes, etc.
- This warranty is void if failure is a direct result of handling &/or transportation, fire, water, accident, misuse, acts of God, attempted repair by unauthorized persons, improper installation, improper reparation, if serial number has been removed or altered, or if unit is used for purpose other than it was originally intended.

Failure to comply with any of these conditions will void this Warranty. In addition, this Warranty does not cover defects due to apparent abuse, misuse or accident.

THE FOREGOING WARRANTY IS IN LIEU OF AND EXCLUDES ALL OTHER WARRANTIES NOT EXPRESSLY SET FORTH HEREIN, WHETHER EXPRESSED OR IMPLIED BY OPERATION OF LAW OR OTHERWISE, INCLUDING, BUT NOT LIMITED TO, ANY REPRESENTATION OF PERFORMANCE AND ANY IMPLIED WARRANTIES OF TITLE, NON-INFRINGEMENT, MERCHANTABILITY OR FITNESS FOR A PARTICULAR PURPOSE. NO OTHER WARRANTIES ARE AUTHORIZED ON BEHALF OF FAGOR UNLESS SPECIFICALLY ISSUED BY FAGOR.

Fagor shall have no liability for incidental or consequential losses, damages or expenses, loss of sales, profits or goodwill, or punitive or exemplary damages directly or indirectly arising from the sale, handling or use of the Equipment or from any other cause relating thereto, whether arising in contract, tort, warranty, strict liability or otherwise. Fagor's liability hereunder in any case is expressly limited, at Fagor's election, to the repair or replacement of Equipment or parts therefore or to the repayment of, or crediting the user with, an amount equal to the purchase price of such goods.



Fagor Commercial, Inc.

6992 N.W. 82nd Ave.

Miami, Fl. 33166

Tel: (305) 779 0170

Fax: (305) 779 0173

1-866-GO-FAGOR

www.fagorcommercial.com