

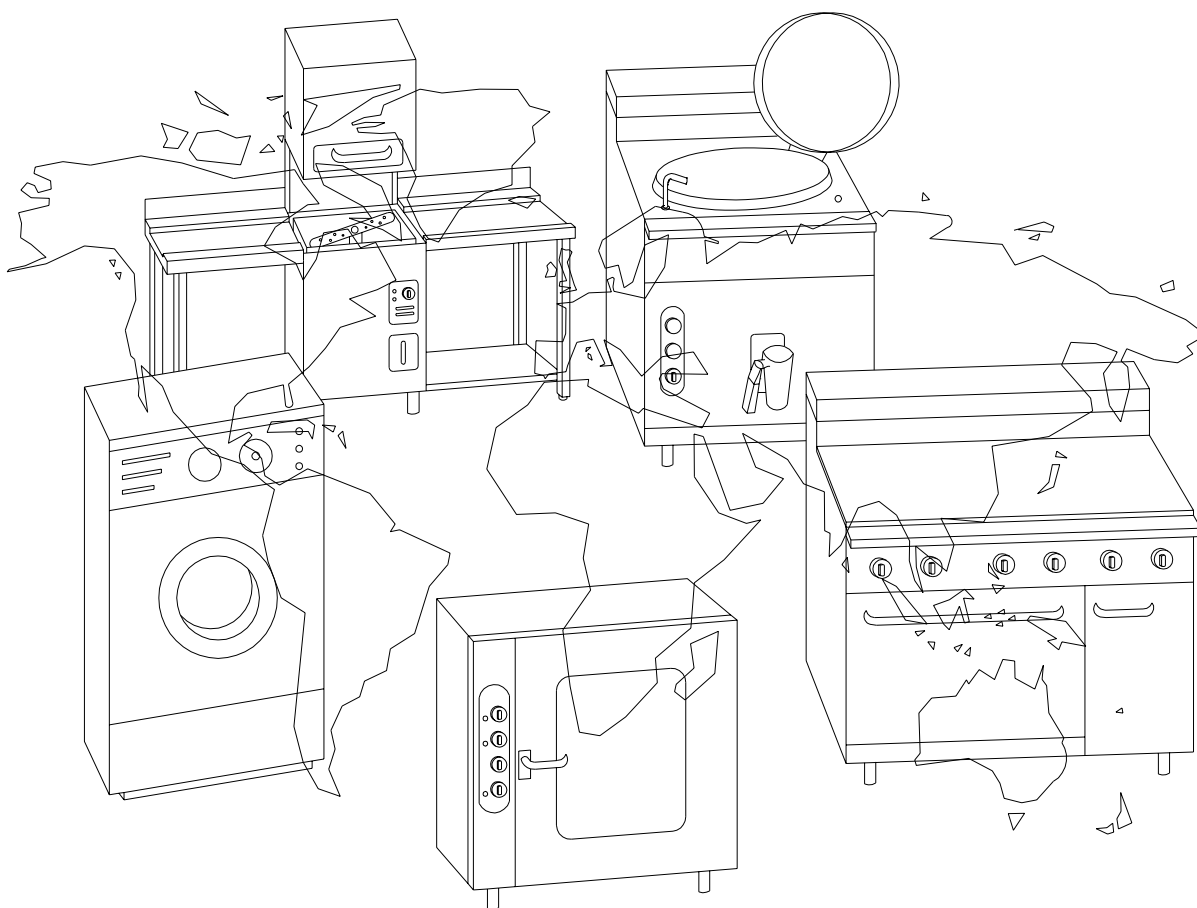
Instrucciones generales para instalación, uso y mantenimiento

Instructions générales pour l'installation, l'utilisation et l'entretien

General instructions for installation, use and maintenance

Allgemeine bedienungsanleitung für Installation, Gebrauch und Wartung

Istruzioni generali per l'installazione, l'uso e la manutenzione



**HORNILLO/
FOURNEAU/
HOT PLATE/
STANDHERD
FORNELLO**

Mod.: H P/G-15

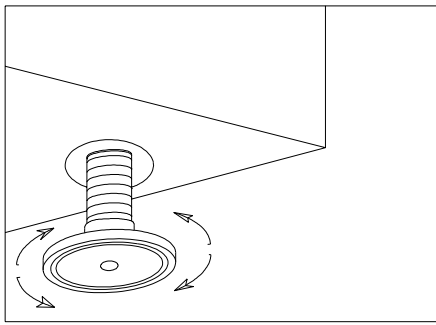


Fig. 1

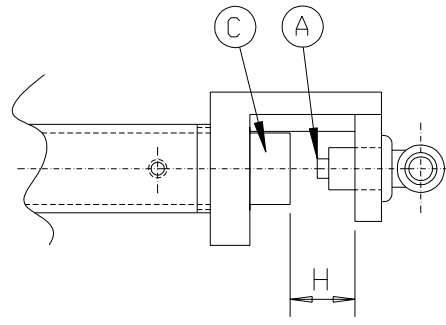


Fig. 2

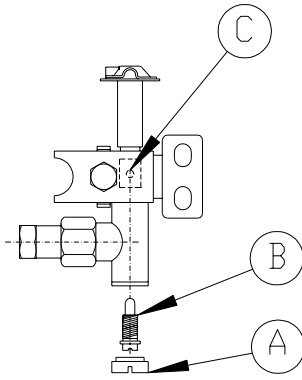


Fig. 3

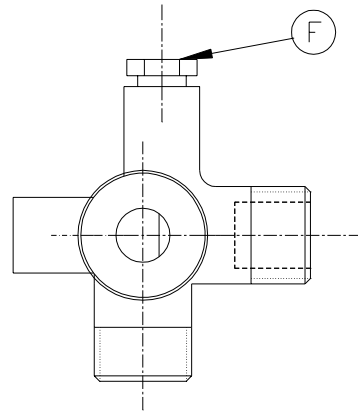


Fig. 4

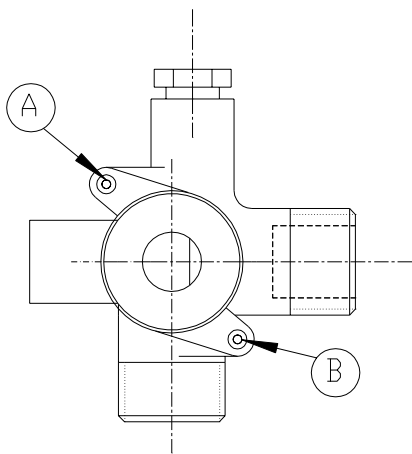


Fig. 5

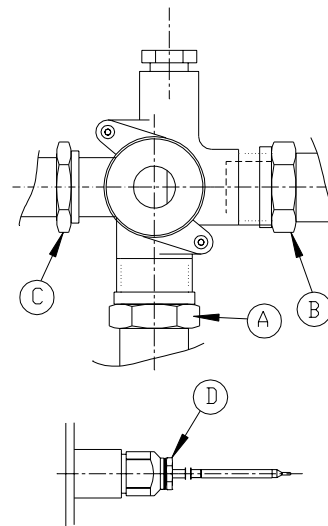


Fig. 6

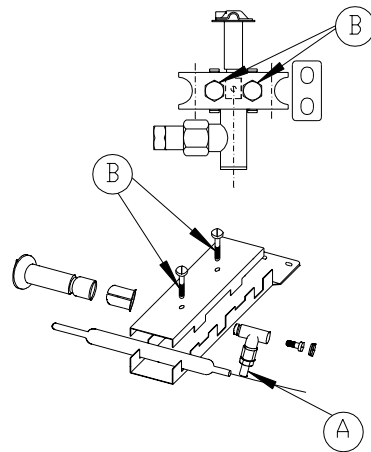
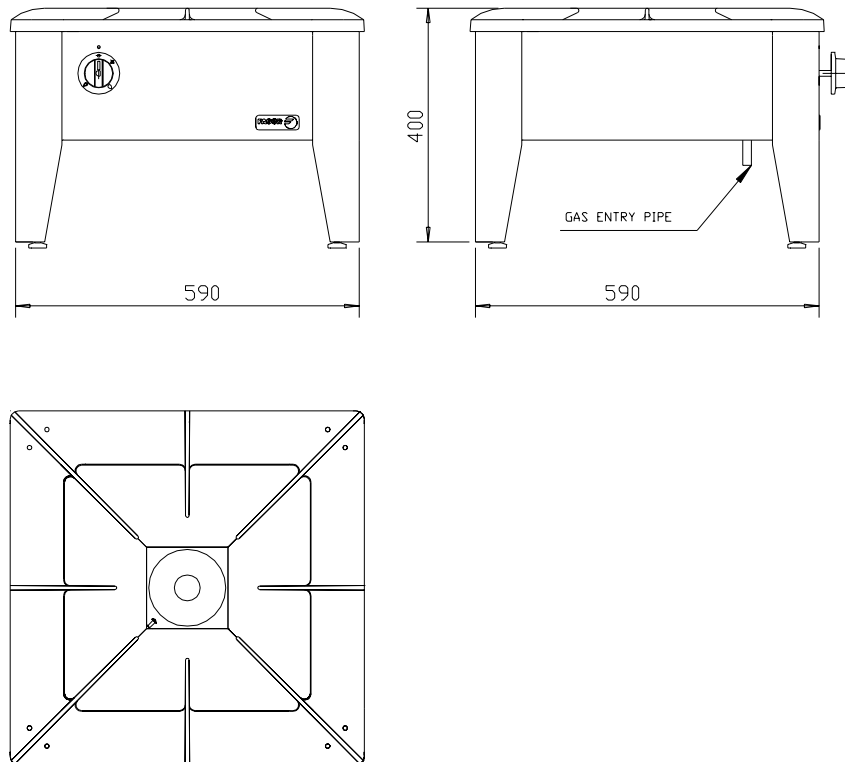


Fig. 7

1.- INSTALLATION

1.1. Dimensions.



1.2.- Positioning

- Position the appliance in well-ventilated premises, so as to prevent fin de prevenir concentrations of harmful substances.
- Level the appliance by turning the adjustable feet(Fig. 1).

1.3.- Table of Specifications.

OUTER DIMENSIONS	mm	Width	590
		Depth	590
		Height	400
NET WEIGHT	30 Kg		
NOMINAL CONSUMPTION	m ³ /h	G-110	3,511
		G-130	2,070
		G-150	2,716
		G-20	1,440
	Kg/h	G-30	1,135
		G-31	1,119
TOTAL POWER			13.6 kW

TABLE 1

FAMILY/GAS		BURNER		PILOT LIGHT
		? injector	H (mm)	? injector
1?	G-110	6 mm	15 mm	Adjustable
	G-130	6 mm	15 mm	Adjustable
	G-150	6 mm	15 mm	Adjustable
2?	G-20	2.8 mm	20 mm	Adjustable
3?	G-30	1.8 mm	25 mm	Adjustable
	G-31	1.8 mm	25 mm	Adjustable

For Australia

Natural gas - 1.0 kPa, 3.10mm injector, total 49.0 MJ/h.

Propane gas - 2.65 kPa, 1.85mm injector, total 49.0 MJ/h.

1.4.- Adjustment to different gases.

- a) The connection of the appliance to the mains should have a cock to close gas permeation.
- b) Make sure there is no gas leaks in the installation.

IMPORTANT NOTE : Any changes in the conditions of the gas circuits of the appliance must be always carried out by an **AUTHORISED TECHNICIAN**.

1.4.1.- Transformation of the burner.

- a) Change the injector.
Remove injectors "A" from the burner (Fig. 2) and replace it with the appropriate one based on the kind of gas to be used (Table 1).
- b) Burner air adjustment.
Once the burner is properly installed, position the venturi "C" (Fig. 2), following measure "H", based on the kind of gas to be used (See Table 1).

1.4.2.- Transformation and adjustment of the pilot light.

To convert NATURAL GAS proceed as follows: Unscrew screw "A" in the figure 3.

Under screw "A" you will find the 0,25mm injector "B" which you must unscrew and replace with the 0,40mm injector supplied with the nozzles.

Turn the air regulator "C" until the flame is stabilised, figure 3.

To convert to TOWN GAS the pilot flame must be regulated by turning regulation screw B until the flame is stabilised.

1.4.3.- Adjustment of the cock minimum flow.

- a) For LP gases, the adjusting screw of minimum flow "F" (Fig. 4) must be fully tightened.
- b) For natural gas and city gas, turn the adjusting screw of the minimum flow "F" (Fig. 4) anticlockwise, until the flame is stable in the minimum position.

Installation for Australia

In accordance with AS 5601, local authority and any other relevant statutory regulations). It is advisable to install an extraction hood for the optimum operation of the appliance. All appliance transit protection must be removed.

Place the appliance in a well ventilated place, clearance from combustible material is 100mm from side / rear and 1000mm from overhead. The general installation must have be fitted with the supplied pressure regulator and shut-off valve on each individual appliance. Flexible hose (if used) must be certified to AS/NZS1869 class B or D.

The installer must test the operation of the appliance after installation, for example: *Gas leakage check, *Setting the test point (located on the regulator with the burner operating), *Setting the turn down rate, *Ensuring the aeration is set correctly for the gas type, *Ensuring the burners are positioned correctly and *Setting the pilot rate to ensure complete main burner ignition. Refer to page 1 for minor adjustment diagrams, contact Fagor Australasia for fault finding, or if this appliance cannot be adjusted to operate correctly.

