

700 Series



Fagor Industrial



## 700 SERIES

The new 700 Series of Fagor Industrial has changed its design, and now has a more modern appearance improving ergonomics and hygiene features



- Constructed in austenitic AISI-304 (18/10) stainless steel
- Inclined control panel, to have a better access to the control buttons and handles
- Stainless steel handles
- Fat collectors under grill for open burners
- Rear chimney covers made of stainless steel

## GAS BOILING TOPS

Open burners



Model	Burners - Kcal		Gas power		Dimensions
	5,000	7,000	Kcal/h	KW	mm
CG7-20	2		10,000	11,63	350x775x290
CG7-20 H		2	14,000	16,28	350x775x290
CG7-40	3	1	22,000	25,58	700x775x290
CG7-40 H		4	28,000	32,56	700x775x290
CG7-60	4	2	34,000	39,53	1.050x775x290

with oven



Model	Burners - Kcal		Oven	Gas power		Dimensions
	5,000	7,000	6,000 NC	Kcal/h	KW	mm
CG7-41	3	1	1	28,000	32,56	700x775x850
CG7-41 H		4	1	34,000	39,53	700x775x850
CG7-61	4	2	1	40,000	46,51	1.050x775x850
CG7-61 H		6	1	48,000	55,81	1.050x775x850

NC : Neutral Cabinet

## GAS SOLID TOP with open burners



Model	Burners - Kcal		Solid top	GN Oven	Gas power		Dimensions
	5,000	7,000	5,000	6,000	Kcal/h	KW	mm
CG7-30-I	2		LEFT		15,000	17,40	700x775x290
CG7-30-D	2		RIGHT		15,000	17,40	700x775x290
CG7-50	3	1	CENTER		27,000	31,40	1.050x775x290

with oven



Model	Burners - Kcal		Solid top	GN Oven	Gas power		Dimensions
	5,000	7,000	5,000 NC	6,000 NC	Kcal/h	KW	mm
CG7-31-I	2		LEFT	1	21,000	24,42	700x775x850
CG7-31-D	2		RIGHT	1	21,000	24,42	700x775x850
CG7-51	3	1	CENTER	1	33,000	38,37	1.050x775x850

NC : Neutral Cabinet

## GAS SOLID TOP RANGES



Model	Solid top		GN Oven	Gas power		Dimensions
	8,000		6,000	Kcal/h	KW	mm
CG7-10	1			8,000	9,30	700x775x290
CG7-11	1		1	14,000	16,28	700x775x850

## GAS RANGES with UK style oven



R : Model with castors

Model	Burners - Kcal		UK Oven	Gas power		Dimensions
	5,000	7,000	7,650	Kcal/h	KW	mm
CGB7-61	4	2	1	41,650	48,43	1,050x775x850
CGB7-61 R	4	2	1	41,650	48,43	1,050x775x850
CGB7-61 H		6	1	49,650	57,73	1,050x775x850
CGB7-61 RH		6	1	49,650	57,73	1,050x775x850

UK style oven: 860 x 570 x 410 mm - Temperature gradient from top to bottom of oven

## ELECTRIC RANGES



Model	Plates - KW		GN Oven	Electric power		Dimensions
	2,6	1,5	6 KW	KW		mm
CE7-20	2			5,20		350x775x290
CE7-40	3	1		9,30		700x775x290
CE7-41	3	1	1	15,30		700x775x850

## GAS RANGES with electric oven



Model	Burners - Kcal		GN Oven	Gas power		Dimensions
	5,000	7,000	6 KW	Kcal/h	KW	mm
CGE7-41	3	1	1	22,000	25,58	700x775x850
CGE7-41 H		4	1	28,000	32,56	700x775x850

## GAS FRY-TOPS

with Max-Min valve



## GAS FRY-TOPS

with thermostatic control



Model	Plate			Gas power		Dimensions
	Type (°)	Hot areas	dm2	Kcal/h	KW	mm
FTG7-05 V L	L	1	21	6,000	6,98	350x775x290
FTG7-05 V R	R	1	21	6,000	6,98	350x775x290
FTG7-10 V L	L	2	43	12,000	13,95	700x775x290
FTG7-10 V R	R	2	43	12,000	13,95	700x775x290
FTG7-10 V L+R	L+R	2	43	12,000	13,95	700x775x290

Model	Plate			Gas power		Dimensions
	Type (°)	Hot areas	dm2	Kcal/h	KW	mm
FTG7-05 L	L	1	21	6,000	6,98	350x775x290
FTG7-05 R	R	1	21	6,000	6,98	350x775x290
FTG7-10 L	L	2	43	12,000	13,95	700x775x290
FTG7-10 R	R	2	43	12,000	13,95	700x775x290
FTG7-10 L+R	L+R	2	43	12,000	13,95	700x775x290
FTG/C7-05 L	L / C	1	21	6,000	6,98	350x775x290
FTG/C7-10 L	L / C	2	43	12,000	13,95	700x775x290

## ELECTRIC FRY-TOPS



Model	Plate			Electric power	Dimensions
	Type (°)	Hot areas	dm2	KW	mm
FTE7-05 L	L	1	21	4,50	350x775x290
FTE7-05 R	R	1	21	4,50	350x775x290
FTE7-10 L	L	2	43	9,00	700x775x290
FTE7-10 R	R	2	43	9,00	700x775x290
FTE7-10 L+R	L+R	2	43	9,00	700x775x290
FTE/C7-05 L	L / C	1	21	4,50	350x775x290
FTE/C7-10 L	L / C	2	43	9,00	700x775x290

L : Smooth hot-plate

R : Ribbed hot-plate

L+R : 1/2 Smooth hot-plate & 1/2 Ribbed hot-plate

C : 50 microns thickness chromium coated steel shething hot-plate

## CHARCOAL GRILLS



Model	Plate			Gas power		Dimensions
	Type (°)	Qty.	dm2	Kcal/h	KW	mm
BG7-05	C. I.	1	17	6,000	6,98	350x775x290
BG7-10	C. I.	2	34	12,000	13,95	700x775x290
BG7-05 I	S. St.	1	17	6,000	6,98	350x775x290
BG7-10 I	S. St.	2	34	12,000	13,95	700x775x290

C. I. : Cast iron grid

S.St. : Stainless steel grid

## TILTING BRATT PANS

Gas



Model	Pan	Tilt	Capacity	Surface	Gas power		Dimensions
		system	litres	dm2	Kcal/h	KW	mm
SBG7-10	S. St.	V	50	42	12,000	13,95	700x775x850

Electric



Model	Pan	Tilt	Capacity	Surface	Electric power	Dimensions
		system	litres	dm2	KW	mm
SBE7-10	S. St.	V	50	42	9,00	700x775x850

V : Manual tilt system

S. St. : Stainless steel pan

## GAS DEEP FAT FryERS



Model	Wells			Gas power		Dimensions
	Quantity	Vol. Litres	Baskets	Kcal/h	KW	mm
FG7-05 1C	1	15	1 BIG	13.000	15,12	350x775x850
FG7-05 2C	1	15	2 SMALL	13.000	15,12	350x775x850
FG7-10 2C	2	2x15	2 BIG	26.000	30,24	700x775x850
FG7-10 4C	2	2x15	4 SMALL	26.000	30,24	700x775x850

## ELECTRIC DEEP FAT FryERS



Model	Wells			Electric power	Dimensions
	Quantity	Vol. Litres	Baskets	KW	mm
FE7-05 1C	1	15	1 BIG	13,50	350x775x850
FE7-05 2C	1	15	2 SMALL	13,50	350x775x850
FE7-10 2C	2	2x15	2 BIG	27,00	700x775x850
FE7-10 4C	2	2x15	4 SMALL	27,00	700x775x850

## GAS BOILING PANS



Model	Pan	Gas power		Dimensions
	Volume (Litres)	Kcal/h	KW	mm
MG7-10	80	15.000	17,44	700x775x850

## Bain Marie system



Model	Pan	Gas power		Dimensions
	Volume (Litres)	Kcal/h	KW	mm
MG7-10 BM	80	15.000	17,44	700x775x850

## ELECTRIC BOILING PAN Bain Marie system



Model	Pan	Electric power	Dimensions
	Volume (Litres)	KW	mm
ME7-10 BM	80	9,00	700x775x850

## STEAM BOILING PAN



Model	Pan	Steam		Dimensions
	Volume (Litres)	Kg/h	Ø inlet	mm
MV7-10 BM	80	25	1"	700x775x850

## PASTA COOKERS

Gas



Model	Well		Gas power		Dimensions
	Volume (l)	Baskets (1/2)	Kcal/h	KW	mm
CPG7-05 NC	20	-	12.000	13,95	350x775x850
CPG7-05	20	2	12.000	13,95	350x775x850

Electric

Model	Well		Electric power	Dimensions
	Volume (l)	Baskets (1/2)	KW	mm
CPE7-05 NC	20	-	8,00	350x775x850
CPE7-05	20	2	8,00	350x775x850

## BAIN MARIE

Gas



Electric



Model	Tank	Gas power		Dimensions
	Volume (Litres)	Kcal/h	KW	mm
BMG7-10	30	5.500	6,40	700x775x290

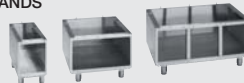
Model	Tank	Electric power	Dimensions
	Volume (Litres)	KW	mm
BME7-05	17	2,80	350x775x290
BME7-10	30	6,00	700x775x290

## WORK TOPS



Model	Dimensions
	mm
EN7-05	350x775x290
EN7-10	700x775x290

## STANDS



Model	Doors for optional assembly (not included)	Dimensions
		mm
MB7-05	1 RIGHT DOOR	350x775x560
MB7-10	1 RIGHT DOOR + 1 LEFT DOOR	700x775x560
MB7-15	2 RIGHT DOORS + 1 LEFT DOOR	1,050x775x560

## Doors in option



BME7-05 over MB7-05 with door

Model	Description	Dimensions
		mm
RIGHT DOOR	Right hinged	350x400
LEFT DOOR	Left hinged	350x400

## ACCESSORIES, MONOBLOCK SYSTEM AND BRIDGE SYSTEM - Examples



CG7-41 with castors



CG7-40 over MB7-10 with doors



CG7-40 + FTG7-05 L over MB7-15



CE7-20 + FTG7-05 L + BME7-05 over MB7-15 with doors and Monoblock front top panel

## BRIDGE SYSTEM - Example

- MG7-10 BM
- CG7-30 D
- BME7-05
- EN7-05
- FTG7-05 R
- FG7-05
- KIT BRIDGE 2+1/2 modules
- Monoblock front top panel 4 modules



- Double fat collectors for open burners, made of stainless steel
- Open burners with more power (5,000 and 7,000 kcal/h)
- Crown protector between burner and fat collector
- Integrated drip trays, for charcoals and fry-tops, made of stainless steel
- Wells in fryers, pasta cookers and bain maries with rounded corners, to facilitate cleaning



- Ovens made of stainless steel, with cast iron flame difussor for better heat distribution, and high power burner (6,000 Kcal/h)
- Water feed in boiling pans, bratt pans and bain-maries, by electrical valve
- Monoblock system, exclusive to Fagor; ensuring perfect hygiene, it eliminates grooves in table front and lateral pieces between the different equipment



Fagor Industrial, S. Coop.

Bº Santxolopetegi, 22  
Aptdo. 17  
20560 OÑATI (SPAIN)

Tel: (+34) 943 71 80 30  
Fax: (+34) 943 71 81 81

[www.fagorindustrial.com](http://www.fagorindustrial.com)

